

# VDOT LOCATION AND DESIGN DIVISION ORGANIZATIONAL CHART

February 15, 2018

ERL = 91  
Strength = 86  
Vacant = 5

Susan Keen, P.E.  
39055-22954  
**State Location & Design Engineer**  
Division Administrator

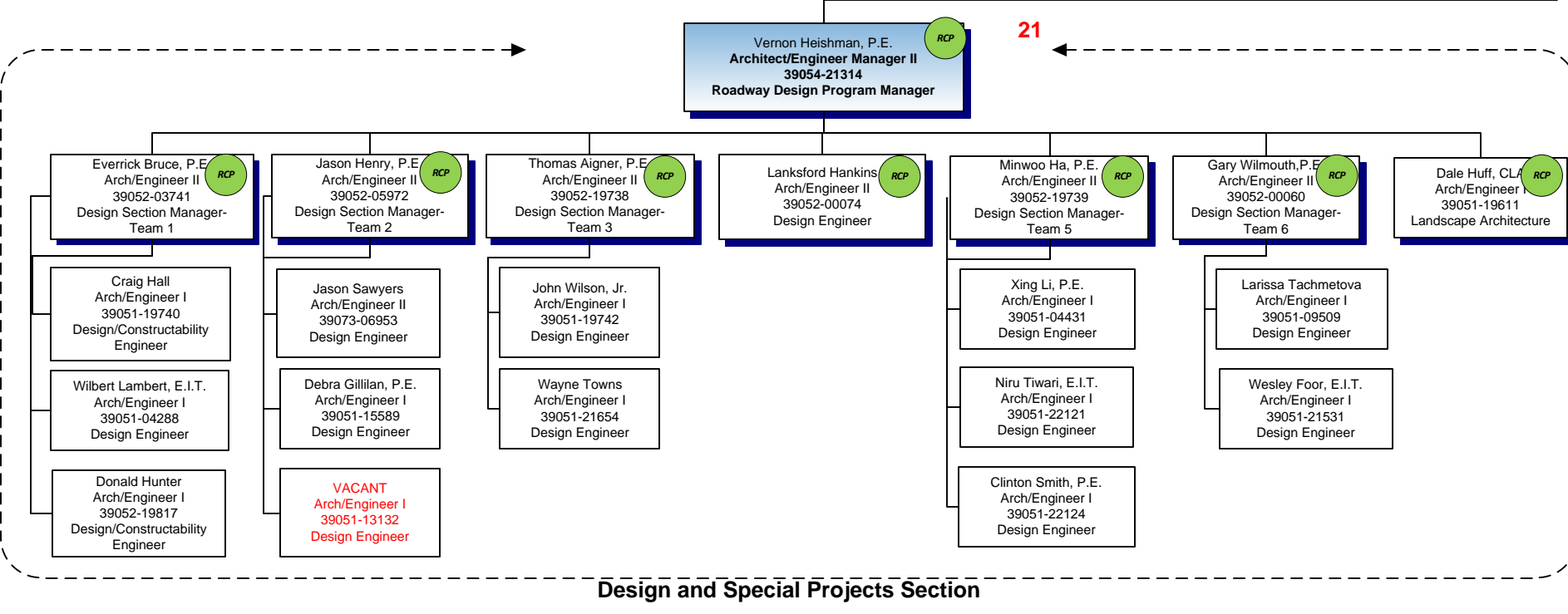
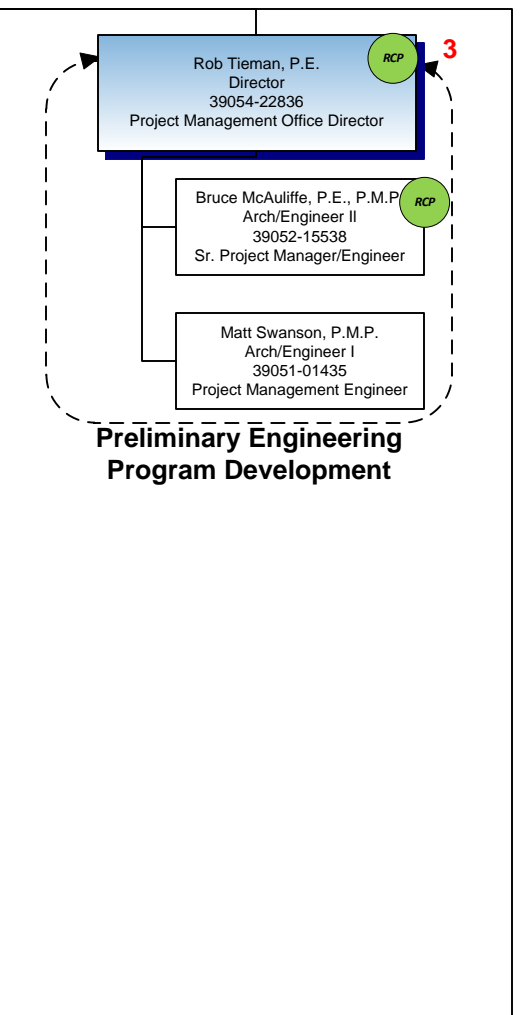
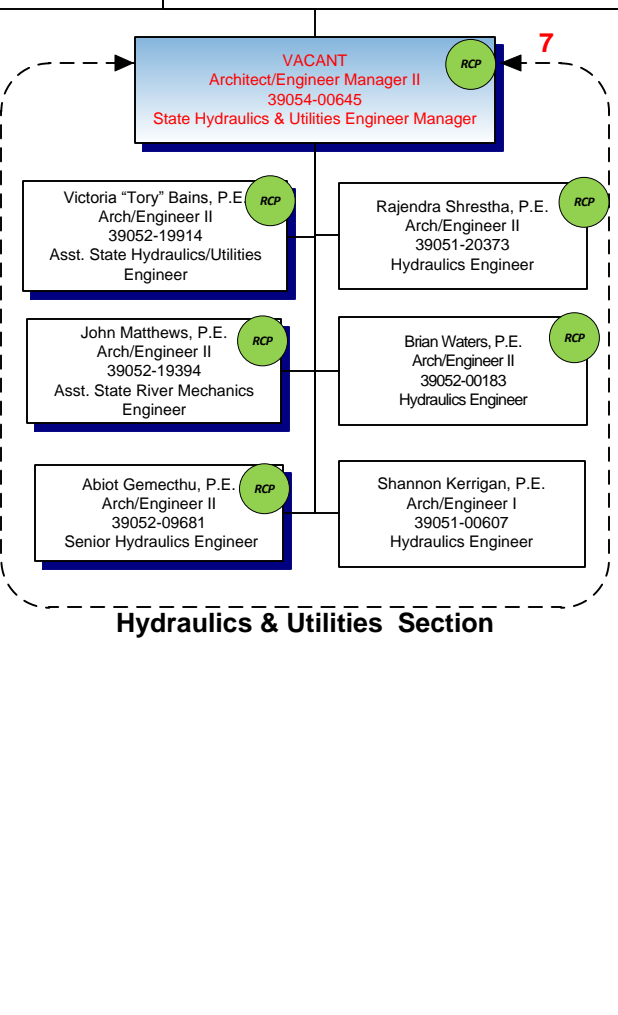
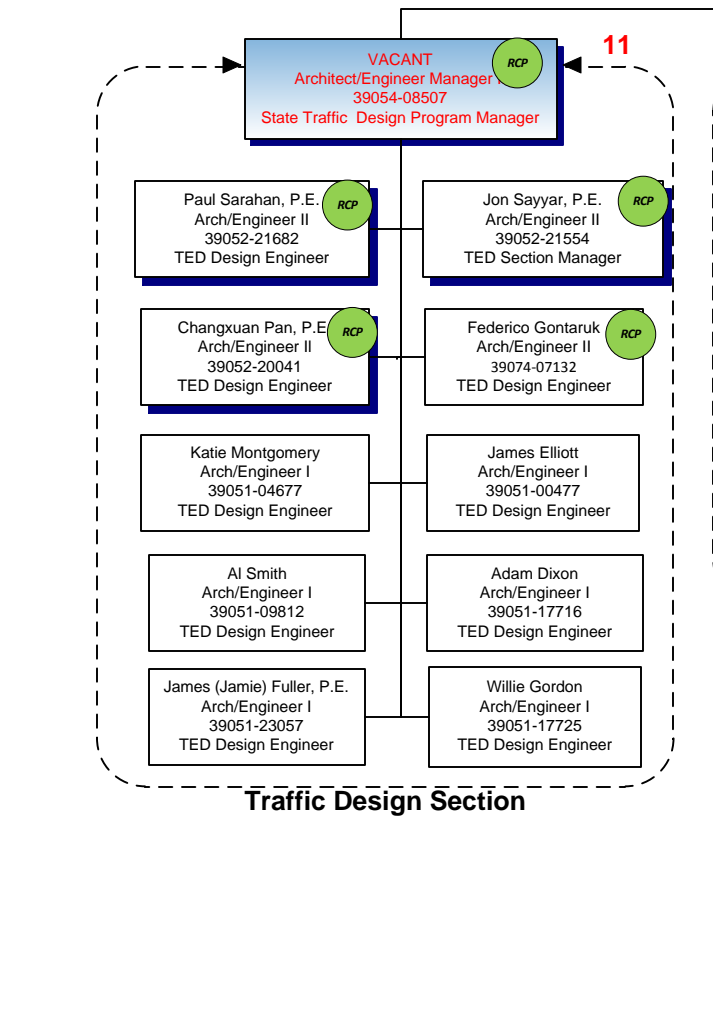
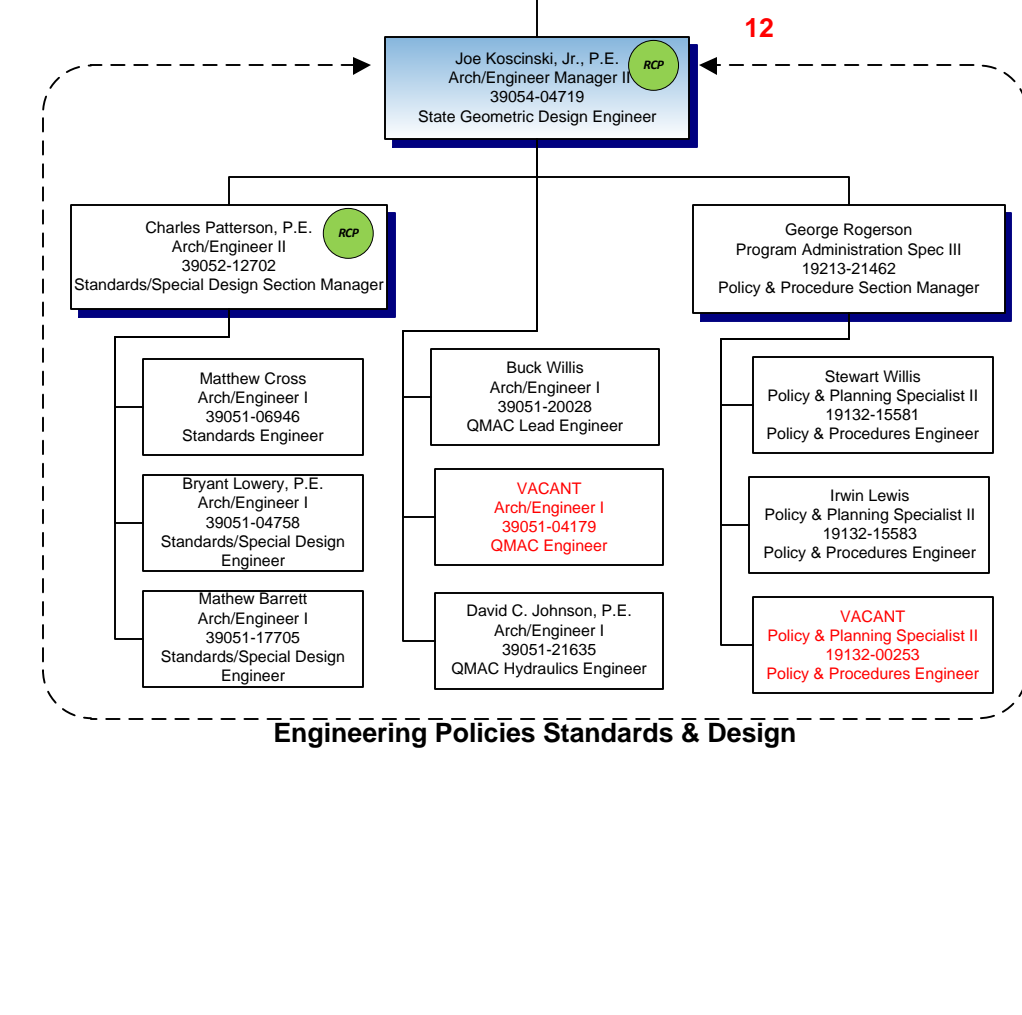
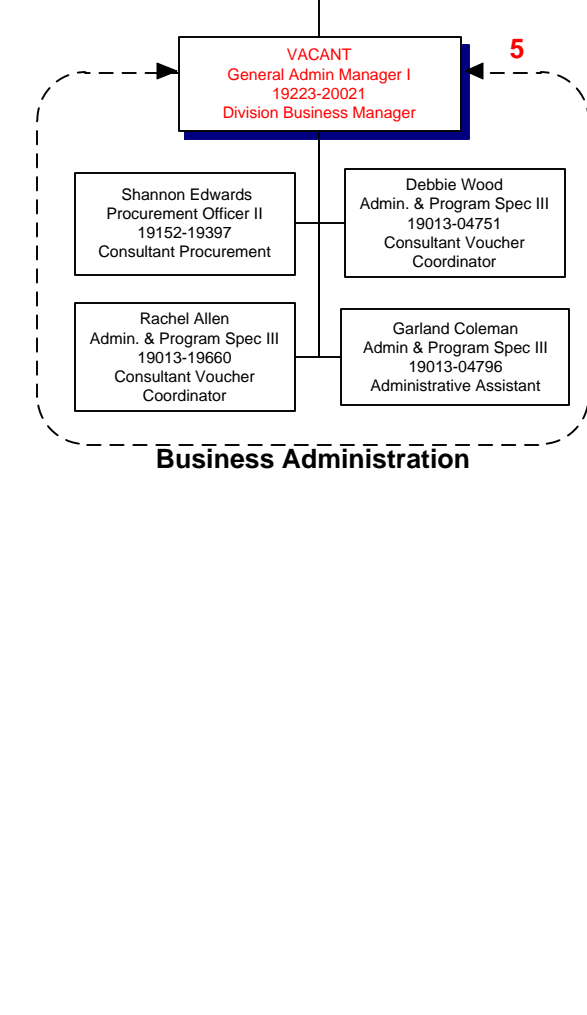
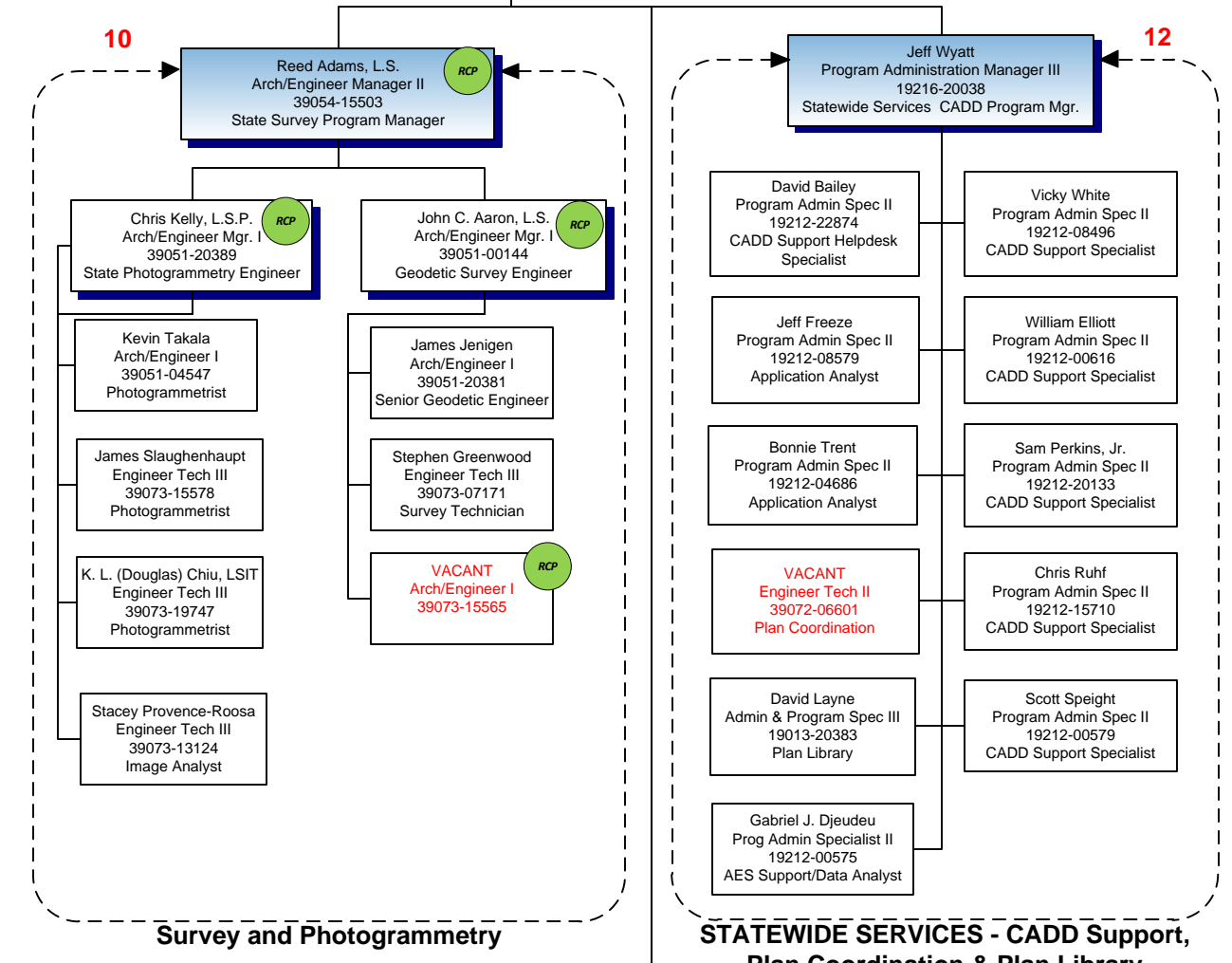
Terry Knouse, P.E.  
Assistant State L&D Engineer  
39054-00267  
(Program Delivery Support)  
NOVA, Salem, Bristol, Staunton & Culpeper

- Northern Virginia District (NOVA)
- Salem District
- Bristol District
- Staunton District
- Culpeper District

Richard Worssam, P.E.  
Assistant State L&D Engineer  
39054-05765  
(Program Delivery Support)  
Hampton Roads, Fredericksburg, Lynchburg & Richmond

- Hampton Roads
- Fredericksburg
- Lynchburg
- Richmond

Chris Swanson, P.E.  
Assistant State L&D Engineer  
39054-00626  
State MS4/SWM Engineer



**LEGEND**

- VACANT Arch/Engineer
- Associate Engineer
- Responsible Charge Position
- Division Administration
- Program Manager