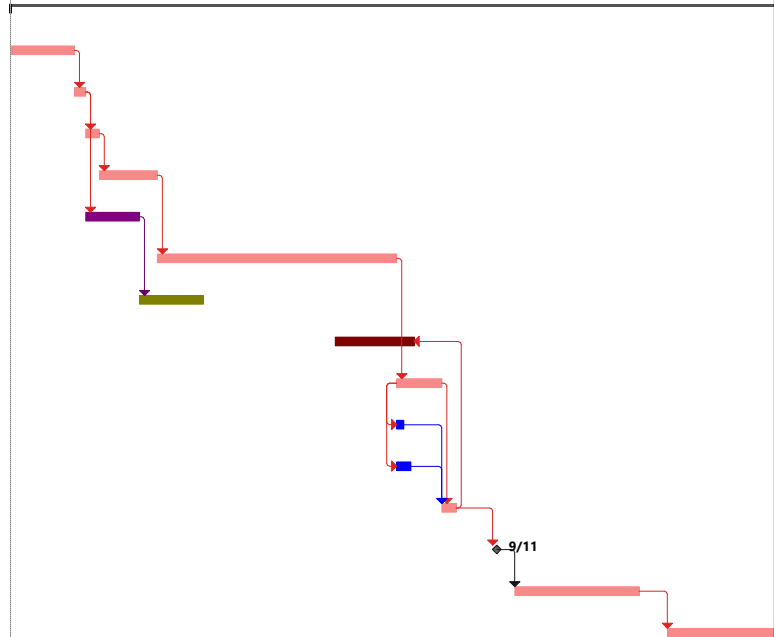


| ID | Task Name                                       | Responsible Division | Duration         | Start             | Finish             | Predecessors | Successors               | September | July | May | March | January | November |
|----|---|----------------------|------------------|-------------------|--------------------|--------------|--------------------------|-----------|------|-----|-------|---------|----------|
| 1  | <b>PROJECT: LAP Tier 1 PE, CN (PH, OnCall)</b>  |                      | <b>1116 days</b> | <b>Mon 1/4/21</b> | <b>Wed 6/25/25</b> |              |                          | E         | M    | B   | E     | M       | B        |
| 2  | 10-Project Agreement / County / State Agreement | LAD                  | 90 days          | Mon 1/4/21        | Wed 5/12/21        |              | 3                        |           |      |     |       |         |          |
| 3  | 12-Authorize Preliminary Engineering            | PMD                  | 15 days          | Thu 5/13/21       | Thu 6/3/21         | 2            | 6,4                      |           |      |     |       |         |          |
| 4  | 28-Consultant Procurement                       | PM                   | 20 days          | Fri 6/4/21        | Thu 7/1/21         | 3            | 5                        |           |      |     |       |         |          |
| 5  | 22-Scope Project                                | PM                   | 80 days          | Fri 7/2/21        | Tue 10/26/21       | 4            | 7                        |           |      |     |       |         |          |
| 6  | 17E-Environmental Review Process (ERP)          | ENV                  | 75 days          | Fri 6/4/21        | Mon 9/20/21        | 3            | 8                        |           |      |     |       |         |          |
| 7  | 65F-Plan Design/Field Inspection                | LD                   | 325 days         | Wed 10/27/21      | Tue 2/21/23        | 5            | 10                       |           |      |     |       |         |          |
| 8  | 25-Draft Environmental Document or CE           | ENV                  | 85 days          | Tue 9/21/21       | Thu 1/27/22        | 6            |                          |           |      |     |       |         |          |
| 9  | 70-Obtain Environmental Permits                 | ENV                  | 105 days         | Fri 10/21/22      | Tue 3/28/23        | 13FF-60 days |                          |           |      |     |       |         |          |
| 10 | 72-Prepare for Advertisement                    | CN                   | 65 days          | Wed 2/22/23       | Tue 5/23/23        | 7            | 12SS,11SS,13             |           |      |     |       |         |          |
| 11 | 69X-Right of Way / Utility Certification Date   | RW                   | 10 days          | Wed 2/22/23       | Tue 3/7/23         | 10SS         | 13                       |           |      |     |       |         |          |
| 12 | 79-CN Funding Review/Authorization of Funds     | PMD                  | 20 days          | Wed 2/22/23       | Tue 3/21/23        | 10SS         | 13                       |           |      |     |       |         |          |
| 13 | 80-Advertise Project                            | CN                   | 20 days          | Wed 5/24/23       | Wed 6/21/23        | 12,11,10     | 14FS+55 days,9FF-60 days |           |      |     |       |         |          |
| 14 | 84-Award Contract                               | CN                   | 1 day            | Mon 9/11/23       | Mon 9/11/23        | 13FS+55 days | 15FS+25 days             |           |      |     |       |         |          |
| 15 | 91-Administer Contract                          | PMC                  | 170 days         | Wed 10/18/23      | Mon 6/24/24        | 14FS+25 days | 16FS+40 days             |           |      |     |       |         |          |
| 16 | 95-District Closeout Completion Date            | PIM                  | 210 days         | Wed 8/21/24       | Wed 6/25/25        | 15FS+40 days |                          |           |      |     |       |         |          |



Project: LAP T1\_PH\_OC\_PE\_CN  
Date: Wed 2/12/20

|           |                 |                    |                       |                |                    |                 |
|-----------|-----------------|--------------------|-----------------------|----------------|--------------------|-----------------|
| Task      | Summary         | Inactive Milestone | Duration-only         | Start-only     | External Milestone | Critical Split  |
| Split     | Project Summary | Inactive Summary   | Manual Summary Rollup | Finish-only    | Deadline           | Progress        |
| Milestone | Inactive Task   | Manual Task        | Manual Summary        | External Tasks | Critical           | Manual Progress |