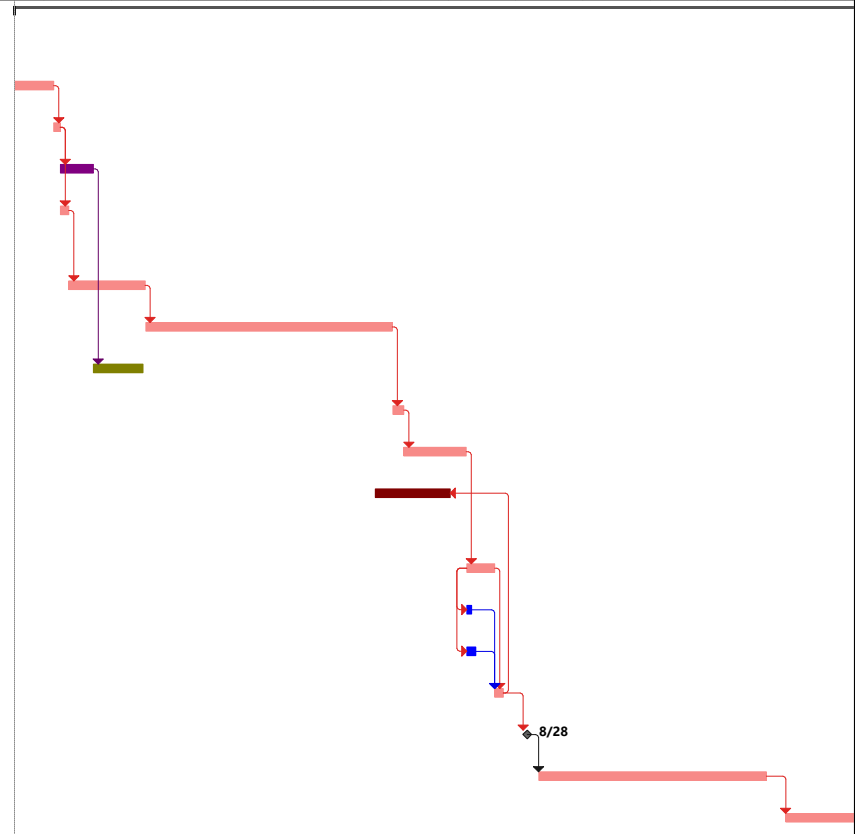


ID	Task Name	Responsible Division	Duration	Start	Finish	Predecessors	Successors	April	July	October	January	April	July	October
								E	M	B	E	M	B	E
1	PROJECT: LAP Tier 2 PE,RW,CN (PH,On Call)		1951 days	Mon 1/4/21	Tue 10/31/28									
2	10-Project Agreement / County / State Agreement	LAD	90 days	Mon 1/4/21	Wed 5/12/21		3							
3	12-Authorize Preliminary Engineering	PMD	15 days	Thu 5/13/21	Thu 6/3/21	2	4,5							
4	17E-Environmental Review Process (ERP)	ENV	75 days	Fri 6/4/21	Mon 9/20/21	3	8							
5	28-Consultant Procurement	PM	20 days	Fri 6/4/21	Thu 7/1/21	3	6							
6	22-Scope Project	PM	170 days	Fri 7/2/21	Fri 3/11/22	5	7							
7	65F-Plan Design/Field Inspection	LD	560 days	Mon 3/14/22	Fri 6/7/24	6	9							
8	25-Draft Environmental Document or CE	ENV	110 days	Tue 9/21/21	Fri 3/4/22	4								
9	52-Authorize RW & UT Funds	PMD	25 days	Mon 6/10/24	Mon 7/15/24	7	10							
10	69-Acquire Right of Way	RW	140 days	Tue 7/16/24	Fri 2/7/25	9	12							
11	70-Obtain Environmental Permits	ENV	170 days	Fri 4/12/24	Mon 12/16/24	15FF-120 days								
12	72-Prepare for Advertisement	CN	65 days	Mon 2/10/25	Mon 5/12/25	10	14SS,13SS,15							
13	69X-Right of Way / Utility Certification Date	RW	10 days	Mon 2/10/25	Mon 2/24/25	12SS	15							
14	79-CN Funding Review/Authorization of Funds	PMD	20 days	Mon 2/10/25	Mon 3/10/25	12SS	15							
15	80-Advertise Project	CN	20 days	Tue 5/13/25	Tue 6/10/25	14,13,12 days,11FF-120 days								
16	84-Award Contract	CN	1 day	Thu 8/28/25	Thu 8/28/25	15FS+55 days	17FS+25 days							
17	91-Administer Contract	PMC	515 days	Mon 10/6/25	Fri 10/29/27	16FS+25 days	18FS+40 days							
18	95-District Closeout Completion Date	PIM	210 days	Mon 1/3/28	Tue 10/31/28	17FS+40 days								



Project: LAPT2_PH_OC_PE_RW_ Date: Wed 2/12/20

Task Split	Summary	Inactive Milestone	Duration-only	Start-only	External Milestone	Critical Split
Milestone	Project Summary	Inactive Summary	Manual Summary Rollup	Finish-only	Deadline	Progress
	Inactive Task	Manual Task	Manual Summary	External Tasks	Critical	Manual Progress