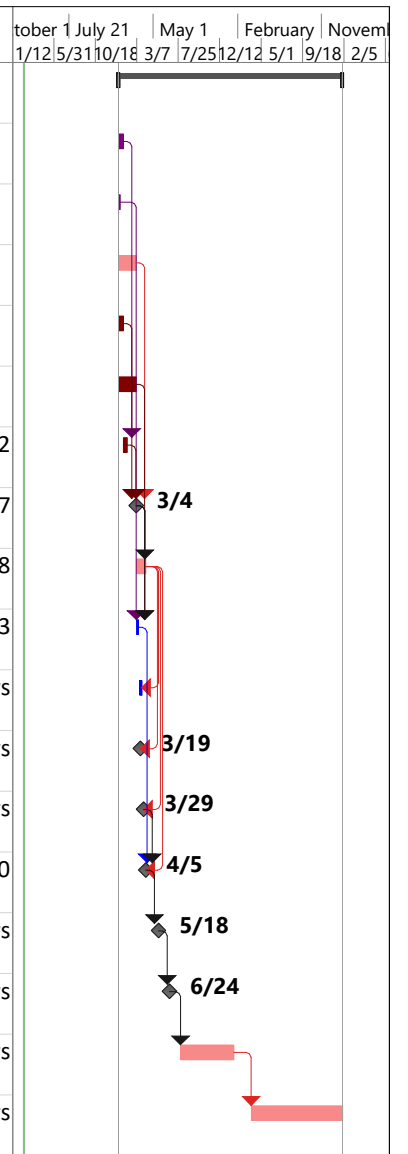


| ID | Task Name  | Responsible Division | Duration        | Start             | Finish             | Predecessors | tober 1 July 21<br>1/12/5/31/10/18 | May 1<br>3/7 7/25/12/12 | February<br>5/1 9/18 | Novem<br>2/5 |
|----|--|----------------------|-----------------|-------------------|--------------------|--------------|------------------------------------|-------------------------|----------------------|--------------|
| 1  | <b>PROJECT: Tier 1 - Complex Maintenance (CN Only)</b> |                      | <b>515 days</b> | <b>Mon 1/4/21</b> | <b>Mon 1/30/23</b> |              |                                    |                         |                      |              |
| 2  | <b>22-Scope Project</b>                                | PM                   | 10 days         | Mon 1/4/21        | Tue 1/19/21        |              |                                    |                         |                      |              |
| 3  | <b>17E-Environmental Review Process (ERP)</b>          | ENV                  | 5 days          | Mon 1/4/21        | Fri 1/8/21         |              |                                    |                         |                      |              |
| 4  | <b>70R-Va Stormwater Mgt Program (VSMP) Const P</b>    | LDH                  | 40 days         | Mon 1/4/21        | Wed 3/3/21         |              |                                    |                         |                      |              |
| 5  | <b>46-Review &amp; Approval of ESC and SWM Plan</b>    | LDH                  | 10 days         | Mon 1/4/21        | Tue 1/19/21        |              |                                    |                         |                      |              |
| 6  | <b>70-Obtain Environmental Permits</b>                 | ENV                  | 40 days         | Mon 1/4/21        | Wed 3/3/21         |              |                                    |                         |                      |              |
| 7  | <b>71C-PAC Constructability Review</b>                 | PM                   | 10 days         | Wed 1/20/21       | Tue 2/2/21         | 2            |                                    |                         |                      |              |
| 8  | <b>71X-PreAdvertisement Conference (PAC) Date</b>      | PM                   | 1 day           | Thu 3/4/21        | Thu 3/4/21         | 4,5,7        |                                    |                         |                      |              |
| 9  | <b>72-Prepare for Advertisement</b>                    | CN                   | 22 days         | Fri 3/5/21        | Mon 4/5/21         | 8            |                                    |                         |                      |              |
| 10 | <b>66-Environmental Reevaluation</b>                   | ENV                  | 5 days          | Fri 3/5/21        | Thu 3/11/21        | 6,8,3        |                                    |                         |                      |              |
| 11 | <b>72B-Bidability Review</b>                           | CN                   | 5 days          | Tue 3/16/21       | Mon 3/22/21        | 9FF-10 days  |                                    |                         |                      |              |
| 12 | <b>72X-Plan Submission Date</b>                        | CN                   | 1 day           | Fri 3/19/21       | Fri 3/19/21        | 9FF-11 days  |                                    |                         |                      |              |
| 13 | <b>69X-Right of Way / Utility Certification Date</b>   | RW                   | 1 day           | Mon 3/29/21       | Mon 3/29/21        | 9FF-5 days   |                                    |                         |                      |              |
| 14 | <b>80-Advertise Project</b>                            | CN                   | 1 day           | Mon 4/5/21        | Mon 4/5/21         | 9FF,13,10    |                                    |                         |                      |              |
| 15 | <b>82-Conduct Bid Opening</b>                          | CN                   | 1 day           | Tue 5/18/21       | Tue 5/18/21        | 14FS+30 days |                                    |                         |                      |              |
| 16 | <b>84-Award Contract</b>                               | CN                   | 1 day           | Thu 6/24/21       | Thu 6/24/21        | 15FS+25 days |                                    |                         |                      |              |
| 17 | <b>91-Administer Contract</b>                          | PMC                  | 120 days        | Mon 8/2/21        | Thu 1/27/22        | 16FS+25 days |                                    |                         |                      |              |
| 18 | <b>95-District Closeout Completion Date</b>            | PIM                  | 210 days        | Mon 3/28/22       | Mon 1/30/23        | 17FS+40 days |                                    |                         |                      |              |



Project: T1\_Maint\_Complex\_CN  
Date: Thu 2/20/20

|                 |  |                       |  |                    |  |                 |  |
|-----------------|--|-----------------------|--|--------------------|--|-----------------|--|
| Task            |  | Inactive Milestone    |  | Start-only         |  | Critical Split  |  |
| Split           |  | Inactive Summary      |  | Finish-only        |  | Progress        |  |
| Milestone       |  | Manual Task           |  | External Tasks     |  | Manual Progress |  |
| Summary         |  | Duration-only         |  | External Milestone |  |                 |  |
| Project Summary |  | Manual Summary Rollup |  | Deadline           |  |                 |  |
| Inactive Task   |  | Manual Summary        |  | Critical           |  |                 |  |