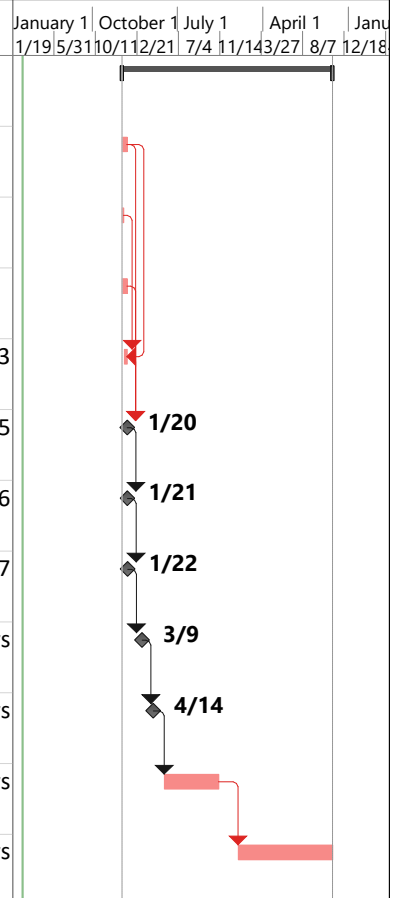


ID	Task Name	Responsible Division	Duration	Start	Finish	Predecessors	January 1 1/19/5/31	October 1 10/11/2/21	July 1 7/4 11/14/3/27	April 1 8/7 12/18	Janu
1	<b>PROJECT: Tier 1 - Simple Maintenance (CN Only)</b>		<b>465 days</b>	<b>Mon 1/4/21</b>	<b>Thu 11/10/22</b>						
2	<b>22-Scope Project</b>	PM	10 days	Mon 1/4/21	Tue 1/19/21						
3	<b>17E-Environmental Review Process (ERP)</b>	ENV	5 days	Mon 1/4/21	Fri 1/8/21						
4	<b>46-Review &amp; Approval of ESC and SWM Plan</b>	LDH	10 days	Mon 1/4/21	Tue 1/19/21						
5	<b>66-Environmental Reevaluation</b>	ENV	5 days	Mon 1/11/21	Tue 1/19/21	2FF,3					
6	<b>72X-Plan Submission Date</b>	CN	1 day	Wed 1/20/21	Wed 1/20/21	2,4,5					
7	<b>69X-Right of Way / Utility Certification Date</b>	RW	1 day	Thu 1/21/21	Thu 1/21/21	6					
8	<b>80-Advertise Project</b>	CN	1 day	Fri 1/22/21	Fri 1/22/21	7					
9	<b>82-Conduct Bid Opening</b>	CN	1 day	Tue 3/9/21	Tue 3/9/21	8FS+30 days					
10	<b>84-Award Contract</b>	CN	1 day	Wed 4/14/21	Wed 4/14/21	9FS+25 days					
11	<b>91-Administer Contract</b>	PMC	120 days	Thu 5/20/21	Tue 11/9/21	10FS+25 days					
12	<b>95-District Closeout Completion Date</b>	PIM	210 days	Wed 1/12/22	Thu 11/10/22	11FS+40 days					



Project: T1\_Maint\_Simple\_CN  
Date: Thu 2/20/20

Task		Inactive Milestone		Start-only		Critical Split	
Split		Inactive Summary		Finish-only		Progress	
Milestone		Manual Task		External Tasks		Manual Progress	
Summary		Duration-only		External Milestone			
Project Summary		Manual Summary Rollup		Deadline			
Inactive Task		Manual Summary		Critical			