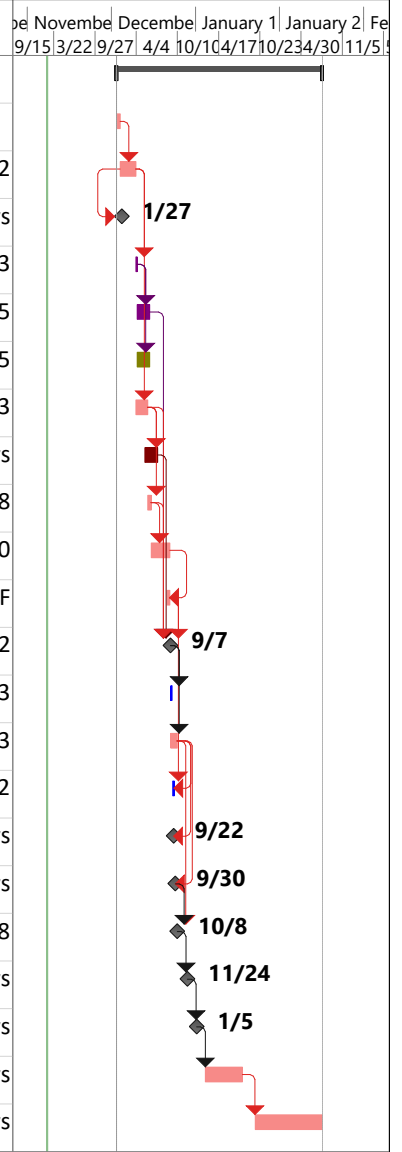


ID	Task Name	Responsible Division	Duration	Start	Finish	Predecessors	October	November	December	January 1	January 2	February			
							9/15	3/22	9/27	4/4	10/10	4/17	10/23	4/30	11/5
1	PROJECT: Tier 1 - Simple Maintenance (PE & CN)		646 days	Mon 1/4/21	Fri 8/4/23										
2	12-Authorize Preliminary Engineering	PMD	10 days	Mon 1/4/21	Tue 1/19/21										
3	22-Scope Project	PM	50 days	Wed 1/20/21	Wed 3/31/21	2									
4	22X-Scoping Team Meeting Date	PM	1 day	Wed 1/27/21	Wed 1/27/21	3SS+5 days									
5	17E-Environmental Review Process (ERP)	ENV	5 days	Thu 4/1/21	Wed 4/7/21	3									
6	24-Determine Permits Needed	ENV	40 days	Thu 4/8/21	Thu 6/3/21	5									
7	25-Draft Environmental Document or CE	ENV	40 days	Thu 4/8/21	Thu 6/3/21	5									
8	65F-Plan Design/Field Inspection	LD	40 days	Thu 4/1/21	Wed 5/26/21	3									
9	70R-Va Stormwater Mgt Program (VSMP) Const P	LDH	40 days	Thu 5/13/21	Fri 7/9/21	8FS-10 days									
10	46-Review & Approval of ESC and SWM Plan	LDH	10 days	Thu 5/27/21	Thu 6/10/21	8									
11	65P-Plan Design (PAC)	LD	60 days	Fri 6/11/21	Fri 9/3/21	10									
12	71C-PAC Constructability Review	PM	10 days	Mon 8/23/21	Fri 9/3/21	11FF									
13	71X-PreAdvertisement Conference (PAC) Date	PM	1 day	Tue 9/7/21	Tue 9/7/21	6,8,9,10,12									
14	66-Environmental Reevaluation	ENV	5 days	Wed 9/8/21	Tue 9/14/21	13									
15	72-Prepare for Advertisement	CN	22 days	Wed 9/8/21	Thu 10/7/21	13									
16	72B-Bidability Review	CN	5 days	Fri 9/17/21	Thu 9/23/21	15FF-10 days,12									
17	72X-Plan Submission Date	CN	1 day	Wed 9/22/21	Wed 9/22/21	15FF-11 days									
18	69X-Right of Way / Utility Certification Date	RW	1 day	Thu 9/30/21	Thu 9/30/21	15FF-5 days									
19	80-Advertise Project	CN	1 day	Fri 10/8/21	Fri 10/8/21	15,18									
20	82-Conduct Bid Opening	CN	1 day	Wed 11/24/21	Wed 11/24/21	19FS+30 days									
21	84-Award Contract	CN	1 day	Wed 1/5/22	Wed 1/5/22	20FS+25 days									
22	91-Administer Contract	PMC	120 days	Mon 2/14/22	Wed 8/3/22	21FS+25 days									
23	95-District Closeout Completion Date	PIM	210 days	Fri 9/30/22	Fri 8/4/23	22FS+40 days									



Project: T1_Maint_Simple_PE_CN Date: Thu 2/20/20	Task		Inactive Milestone		Start-only		Critical Split	
	Split		Inactive Summary		Finish-only		Progress	
	Milestone		Manual Task		External Tasks		Manual Progress	
	Summary		Duration-only		External Milestone			
	Project Summary		Manual Summary Rollup		Deadline			
	Inactive Task		Manual Summary		Critical			