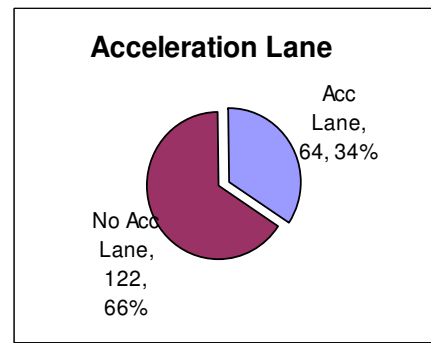
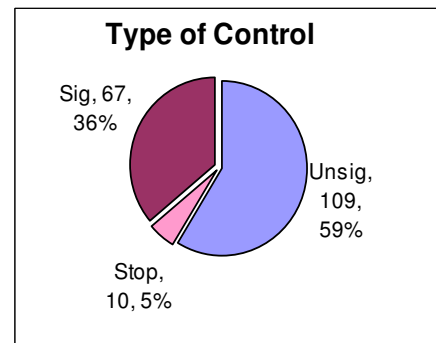
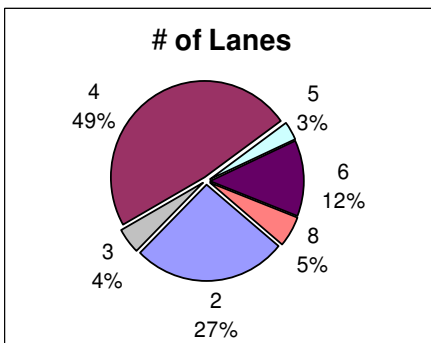
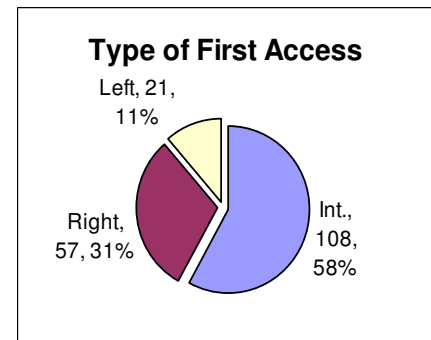
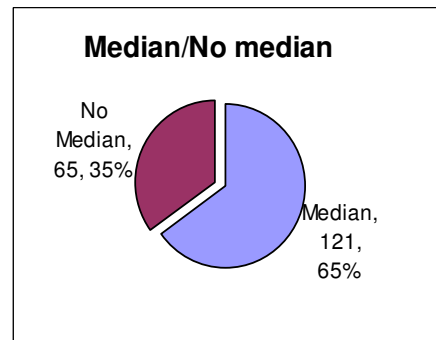
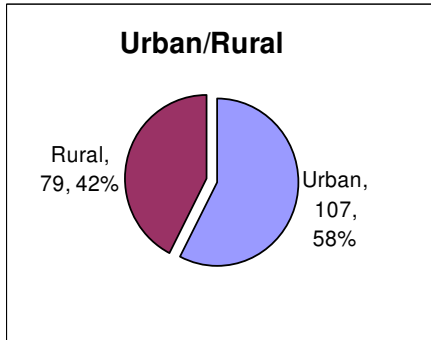


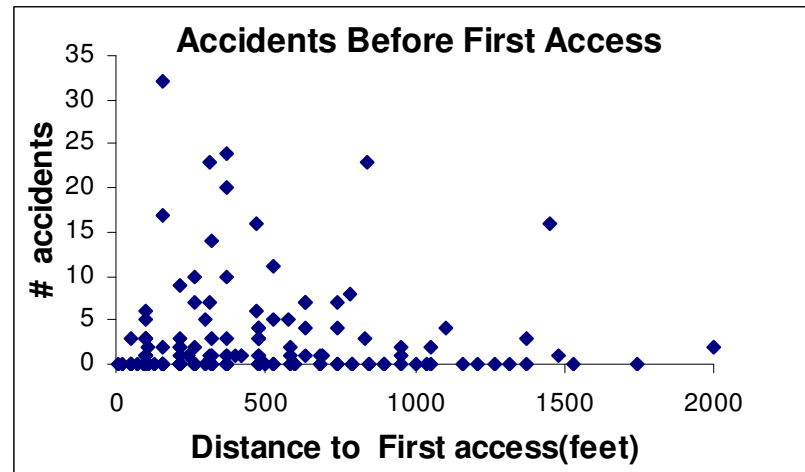
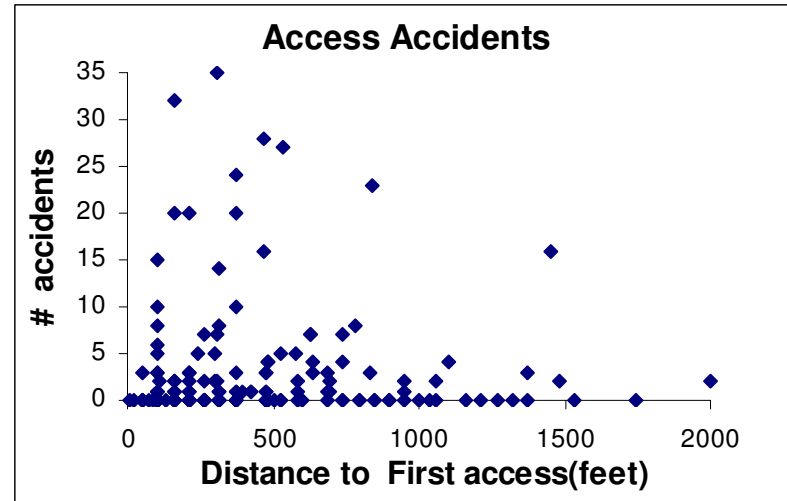
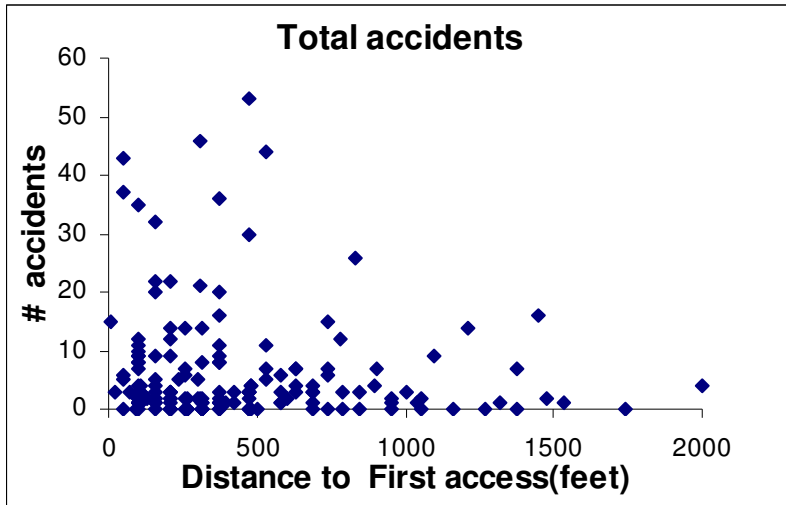
VA Tech Access Spacing Study: 2007

- HESHAM RAKHA, Ph.D., P.E. Professor, Civil & Environmental Engineering - Virginia Tech
- Analyze crash data at 186 intersections
- Compare frequency of crashes for different spacing of entrances from highway interchanges
- Develop guidelines for optimum entrance point spacing in terms of safety (reduced number of crashes)

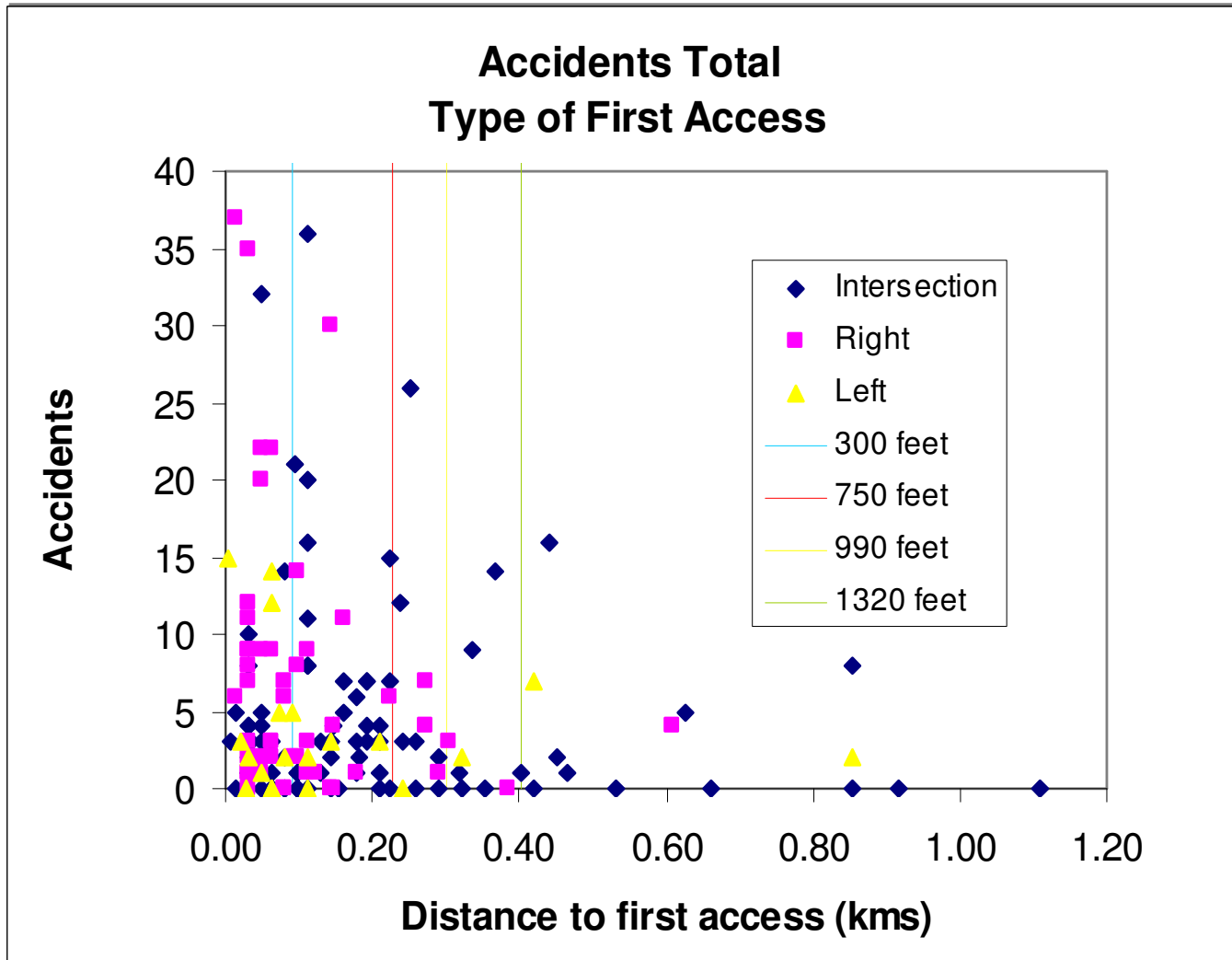
186 Locations



Total Accidents 2277



Type of First Access (Combined)



Signalized and Unsignalized Average Crash Rates

