



Gloucester Point Project Update

March 17, 2009

George Romack, P.E.

District Construction Engineer

Why are we here?

Project Purpose

- Access Management
- 16' wide stamped concrete raised median
- Continuous right turn lanes in each direction with curb & gutter
- Relocates Greate Road across from Camp Okee Drive
- New traffic signal at the new Greate Road / Camp Okee Drive
- Left turn turnaround north of the bridge



How did we get here?

Regional Studies

- **Gloucester County Comprehensive Plan – September 1991**
- **Route 17 Corridor Study – March 1992**
- **York River Crossing Travel Demand Study – August 2000**
- **Gloucester Gateway Committee Plan – December 2001**

How are we paying for it?

- **Fredericksburg District Primary Construction Allocations**
- **Hampton Roads Regional STP Allocations**
- **No Stimulus Money**

- **Funding began in FY 2001**
- **Fully funded in FY 2009**

What will it look like?



©2014 VDOT, Fredericksburg L&O
Artistic, simulation rendering only;
see plan sheets for exact road design.

What will it look like?



©2004 VDOT, Fredericksburg L&D
Artistic simulation rendering only;
see plan sheets for exact road design.

What will it look like?



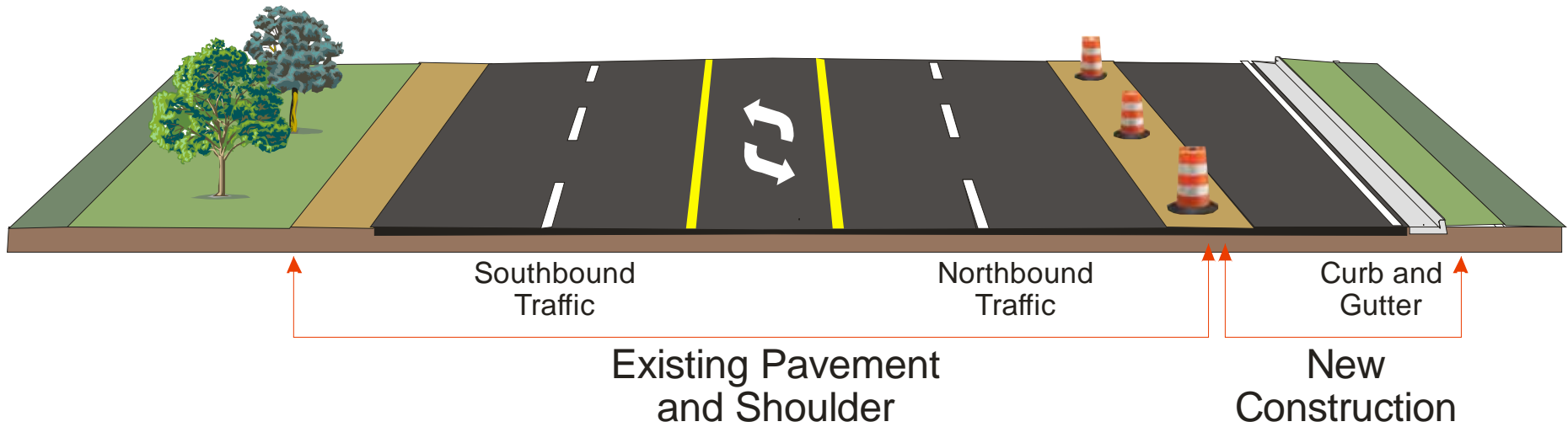
What will it look like?



©2004 VDOT, Fredericksburg L&D
Artistic simulation rendering only
see plan sheets for exact road design

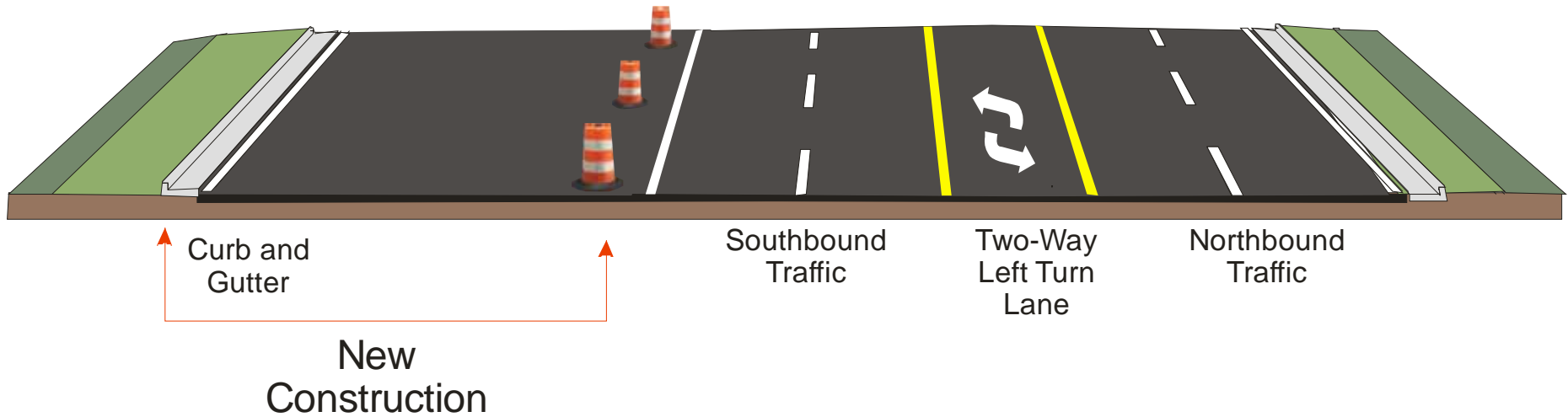
How will we get there?

PHASE 1



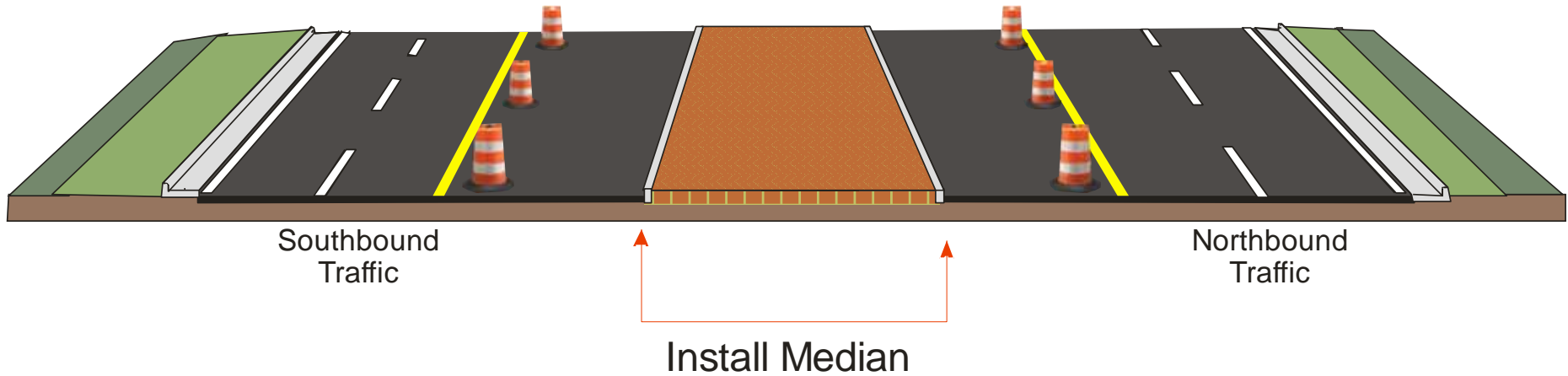
How will we get there?

PHASE 2



How will we get there?

PHASE 3



When will we get there?

Phase 1 – Summer 2010

- Temporarily widen the southbound shoulder to allow the continuous left turn lane to remain
- Shift traffic to the east
- Construct the northbound lanes

Phase 2 – Summer 2011

- Shift the traffic to the west
- Construct the southbound lanes

Phase 3 – October 2011

- Shift the traffic to the outside lanes
- Construct the center median
- Install new traffic signals

How will we let everyone know?

Communications Plan

- **Public Information Meeting**
 - Prior to restarting Phase 1
- **Newspaper Articles**
 - Monthly Updates
 - Media Blitz prior to changes in traffic patterns
- **VDOT Website**
 - Better description of project
 - Monthly Updates
- **Business Owner Meetings**
 - Quarterly Updates
- **Board of Supervisors**
 - Monthly Updates

Questions?