

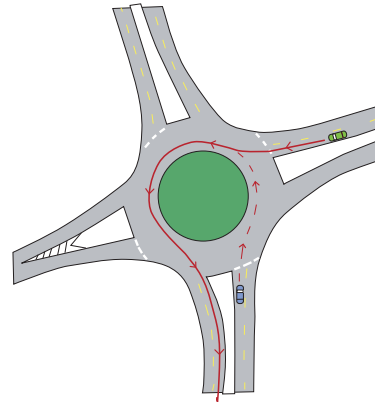
# Route 50 Traffic Calming Gilbert's Corner Roundabouts A Design-Build Project

What began as a grassroots movement to protect the Mosby Heritage Area from the effects of increased traffic and development, has evolved into the Route 50 Traffic Calming Project. Traffic calming is the physical alteration of a road's design to slow traffic and improve safety for pedestrians and motorists. In addition, preserving the historic and rural nature of Route 50 is an important goal of the project.

Through a partnership with the Route 50 Task Force, the Virginia Department of Transportation is working to convert the community's vision into reality. Three traffic calming projects are being constructed along a 20-mile corridor from Paris in Fauquier County to Lenah in Loudoun County.

The first traffic calming project, in Upperville, was completed in December 2007. A similar project in Aldie is expected to begin in 2009. The Gilbert's Corner project, which includes four roundabouts, begins in spring 2008 and will be completed in fall 2009.

Roundabouts are considered as one of the safest types of intersection designs. They can move traffic while reducing crashes, delays, fuel consumption and air pollution. In addition, they are less expensive to maintain than a signalized intersection.



The project includes building roundabouts at:

- › Gilbert's Corner (intersection of Route 50 and Route 15)
- › Intersection of Route 50 and Watson Road
- › Route 50 and a new connector road
- › Route 15 and a new connector road

The new two-lane connector road will connect Routes 50 and 15 with roundabouts at each end. By using the design-build method, where design and construction are closely coordinated and at times occur simultaneously, the overall time and cost of this project has been significantly reduced.



## Schedule

**Late 2007/early 2008** – Roadway design, construction staging plan, environmental permits, right of way acquisition and utility relocation.

**Spring 2008 – Phase 1:** Build connector road and Roundabout 2.

**Fall 2008 – Phase 2:** Improve Route 15; build Roundabouts 3 and 4; begin Roundabout 1.

**Spring 2009 – Phase 3:** Improve Route 50; continue Roundabout 1.

**Fall 2009 – Phase 4:** Complete Roundabout 1 and landscaping.

## Project Cost

\$15.8 million for preliminary engineering, design and construction.

## Contacts and Web sites

Billy Green

VDOT Route 50 Construction Manager

**William.Green@VDOT.Virginia.gov**

703.327.4400

Kenny Robinson

VDOT Route 50 Corridor Program Manager

**Kenny.Robinson@VDOT.Virginia.gov**

703.383.2656

Construction updates

**[www.virginiadot.org/projects/northernvirginia/route\\_50\\_traffic\\_calming\\_measures.asp](http://www.virginiadot.org/projects/northernvirginia/route_50_traffic_calming_measures.asp)**

How to drive a roundabout video

**[www.virginiadot.org/info/faq-roundabouts.asp](http://www.virginiadot.org/info/faq-roundabouts.asp)**

## Route 50 Traffic Calming Gilbert's Corner Roundabouts



Roundabout 1 – Gilbert's Corner, Route 50 and Route 15

Roundabout 2 – Route 50 and Connector Road

Roundabout 3 – Route 50 and Watson Road

Roundabout 4 – Route 15 and Connector Road

