

PROJECT MANAGER: Angel.Tao (703)259-2377.NOVA
SURVEYED BY, DATE: Leon.Treutle.LS (703)259-3224.NOVA.3/1/16
DESIGN BY: Thomas.Algner.PE (804)786-1560.C.O.
SUBSURFACE UTILITY BY, DATE: Leon.Treutle.LS (703)259-3224.NOVA.3/1/16

Utility Owner's List

Water & Sewer:

Maureen Knight (703) 335-7930
Prince William County Service Authority
Engineering
P.O. Box 2266
4 County Complex Court
Woodbridge, VA 22195-2266
FAX (703) 335-8933.

Power:

Andrew J. Brooks
Underground Damage Prevention Manager
Dominion Emergency Preparedness Center
Dominion Virginia Power
701 E. Cary St.
804-771-3655
804-514-2277 cell
Andrew.J.Brooks@dom.com

David Via
Prince William Schools
571-722-8061

Telecomm:

William (Bill) Lacy
Verizon Project Designer / Highway Relocations
Verizon
9401 Peabody Street Manassas, VA 20110
Office 703/369-9571
cell 540/520-1905
william.lacy@verizon.com

Paul Gum
RF Designer/Drafter
Comcast
324 West Main St.
Charlottesville, VA 22903
Phone: (434) 951-3761
Fax: (434) 817-1380
PAUL_GUM@comcast.com

Gas:

Washington Gas
6801 Industrial Road
Springfield, VA
703-750-1000
Maps Administrator
703-750-4745

REVISED	STATE	ROUTE	STATE	PROJECT	SHEET NO.
	VA.	638		0638-076-203, RW-201 C-501	3

DESIGN FEATURES RELATING TO CONSTRUCTION OR TO REGULATION AND CONTROL OF TRAFFIC MAY BE SUBJECT TO CHANGE AS DEEMED NECESSARY BY THE DEPARTMENT

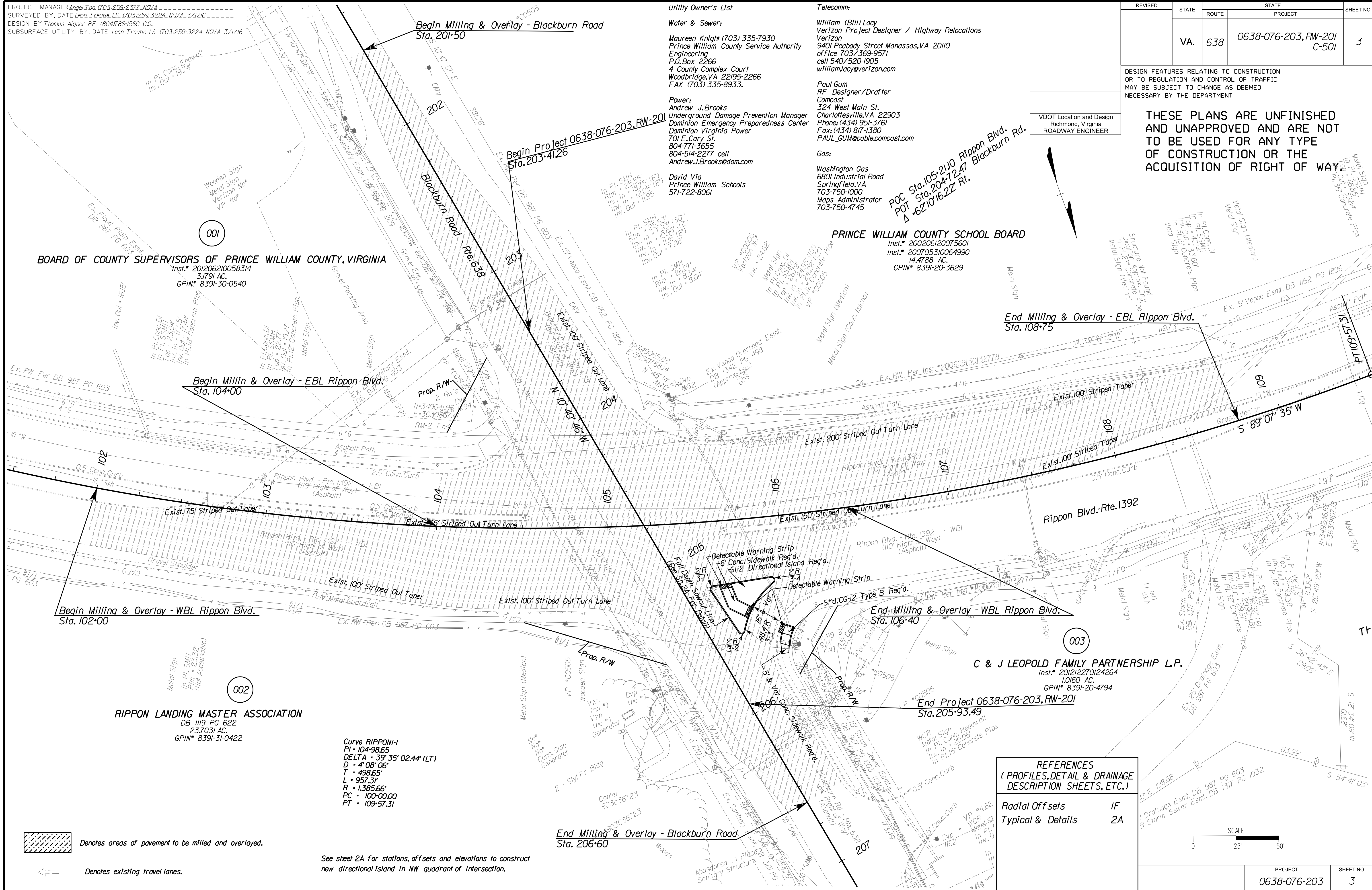
THESE PLANS ARE UNFINISHED AND UNAPPROVED AND ARE NOT TO BE USED FOR ANY TYPE OF CONSTRUCTION OR THE ACQUISITION OF RIGHT OF WAY.

VDOT Location and Design
Richmond, Virginia
ROADWAY ENGINEER

PRINCE WILLIAM COUNTY SCHOOL BOARD

Inst.* 200206120075601
Inst.* 200705310064990
14.4788 AC.
GPIN* 8391-20-3629

POC Sta. 105+21.10 Rippon Blvd.
POT Sta. 204+12.47 Blackburn Rd.
Δ +62101622 Rt.



BOARD OF COUNTY SUPERVISORS OF PRINCE WILLIAM COUNTY, VIRGINIA
Inst.* 201206210058314
3.1791 AC.
GPIN* 8391-30-0540

RIPPON LANDING MASTER ASSOCIATION
DB 1119 PG 622
23.7031 AC.
GPIN* 8391-31-0422

Curve RIPPON-1
PI + 104+98.65
DELTA + 39° 35' 02.44" (LT)
D + 4' 08" 06"
T + 498.65'
L + 957.31'
R + 1,385.66'
PC + 100+00.00
PT + 109+57.31

Denotes areas of pavement to be milled and overlaid.

Denotes existing travel lanes.

See sheet 2A for stations, off-sets and elevations to construct new directional Island in NW quadrant of Intersection.

REFERENCES
(PROFILES, DETAIL & DRAINAGE DESCRIPTION SHEETS, ETC.)

Radial Off sets IF
Typical & Details 2A



PROJECT	SHEET NO.
0638-076-203	3