

## PROJECT DESCRIPTION

The primary purpose of this project is to increase safety and capacity using new design criteria and access management at the existing Route 11/220/220 Alternate intersection and on the northbound traffic movements to and from Interstate 81 at this intersection. The proposed project includes the following:

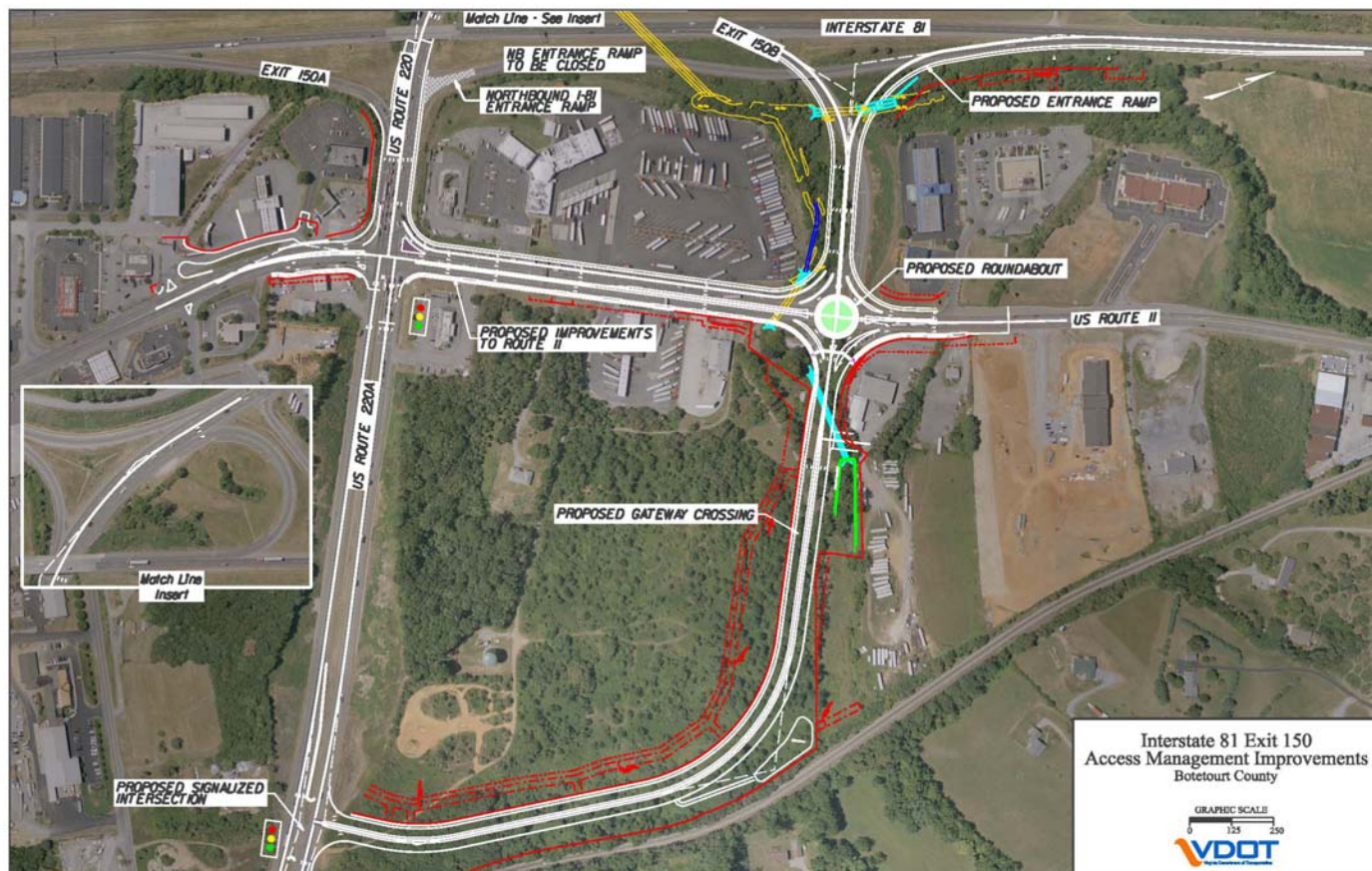
- Relocating the northbound I-81 entrance ramp (from northbound Route 220 onto northbound I-81) to a new location adjacent to the Exit 150B off-ramp
- Constructing a roundabout at the Exit 150B/Route 11 intersection to improve traffic flow, enhance safety and increase capacity
- Building a new loop road, Gateway Crossing, to extend from the new Route 11 roundabout to Route 220 Alternate
- Providing better access management on Route 11 by installing a raised median and reducing the number of entrances
- Modifying the entrances onto Route 11 as right-in/right-out only
- Acquiring five businesses including the Travel Centers of America

The average daily traffic volume of the Route 11/220/220 Alternate intersection is 38,000 vehicles.

The design of this project is in compliance with the Stormwater Management Act, stormwater regulations and the annual stormwater management standards and specifications approved by the Virginia Department of Conservation and Recreation. The construction of this project will conform to the nationwide best management practices, VDOT specifications and special provisions, and the Virginia Department of Soil and Water conservation regulations. Also, during construction, every reasonable effort will be made to protect the environment with the respect to dust and erosion control. Access to all properties will be maintained during construction.

Potential impacts to the flood plains will be evaluated and addressed on this project.

## Project Graphic



## Estimated Project Cost

Total Cost:  
\$41 million (approximately)  
Engineering of Roadway Plans:  
\$5 million  
Right of Way Acquisition and Utility Relocation:  
\$23 million  
Construction:  
\$13 million  
This cost is subject to change.

## Environmental Review

VDOT's Salem District Environmental Office has performed environmental reviews and coordination to obtain information about environmental resources in the project vicinity; to provide natural and historic resource agencies an opportunity to review and comment on the project during its development; and to identify opportunities for avoidance, minimization and mitigation of potential environmental impacts.

The National Environmental Policy Act (NEPA) is applicable to this project and a NEPA document in the form of a Draft Environmental Assessment has been developed in cooperation with the Federal Highway Administration and in accordance with federal guidelines. The NEPA document includes information from various technical reviews including those related to natural resources, water quality, threatened and endangered species, air quality, noise, etc. In compliance with the National Historic Preservation Act, Section 106 and 36 CFR Part 800, information concerning the potential effects of the proposed project on properties listed in or eligible for listing in the National Register of Historic Places is also provided in the environmental documentation.

The project will continue to be coordinated with the appropriate federal, state, and local agencies as part of the environmental review and approval processes required throughout project development and construction. All required environmental clearances and permits will be obtained prior to commencement of construction. Strict compliance with all environmental conditions and commitments resulting from regulatory approvals, and implementation of VDOT's specifications and standard best management practices will protect the environment during construction.

The NEPA document and the results of other environmental studies are available for review.

## Anticipated Schedule

**The following schedule has been proposed:**  
**Public hearing** – Spring 2012  
**Right of way acquisition** – Spring 2013  
**Begin construction** – Fall 2014

## Civil Rights

VDOT ensures nondiscrimination and equal employment in all programs and activities in accordance with Title VI and Title VII of the Civil Rights Act of 1964. If you need more information in regards to your civil rights on this project or special assistance for persons with disabilities or limited English proficiency, contact the project manager listed on the back of this brochure.

## Right of Way

The construction of the Interstate 81 Exit 150 Access Management Improvements in Botetourt County will require the displacement of one tenant, five businesses and no non-profit organizations.

As we further develop and finalize the development of this project, additional easements for utility relocation may be required beyond the proposed right of way shown on the public hearing plans. The property owners will be informed of the exact location of the easements during the right of way acquisition process and prior to construction.

Information about right of way acquisition is discussed in VDOT's brochure entitled, "Right of Way and Utilities: a Guide for Property Owners and Tenants." Copies of this booklet are available from a VDOT right of way agent.

After this meeting, information regarding right of way may be obtained from the right of way contact listed on the back of this brochure.

Any tenants or businesses that are displaced as a result of this project will be offered relocation assistance.



## Get Involved

Ten days after this public hearing on March 18, 2012, the public comment period will close. VDOT will review and evaluate any information received as a result of the public hearing. This information, including the hearing summary, will be available for review at the VDOT office address listed below. After all comments have been addressed, the information received as a result of the hearing will be presented to the Commonwealth Transportation Board to consider the proposed location for the project. If a location is approved by the CTB, the major design features will then be presented to VDOT's Chief Engineer or designee for approval.

Comments can also be submitted in writing to [saleminfo@vdot.virginia.gov](mailto:saleminfo@vdot.virginia.gov). Information must be postmarked, emailed or delivered to VDOT within 10 calendar days of today's meeting in order to be included in the location and design public hearing record.

Project information shared here is available for review after the public hearing at VDOT's Salem District Office located at 731 Harrison Ave., Salem, VA 24153.

## Contact Information

<b>Primary Contact:</b> <b>Brian Becker, P.E.</b>	Project Manager	731 Harrison Ave. Salem, VA 24153	540-387-5353 1-800-367-7623
<b>Lori Snider</b>	Salem District Right of Way Manager	731 Harrison Ave. Salem, VA 24153	540-387-5366 1-800-367-7623
<b>Jason Bond</b>	Salem District Office of Public Affairs	731 Harrison Ave. Salem, VA 24153	540-387-5493 1-800-367-7623



© 2012 Commonwealth of Virginia



Location and Design Public Hearing  
**Interstate 81 Exit 150**  
**Access Management Improvements**  
**Botetourt County**  
 Thursday, March 8, 2012, 5 - 7 p.m.  
 Lord Botetourt High School  
 1435 Roanoke Road  
 Daleville, VA 24083

## Public Meeting

**Welcome to the Virginia Department of Transportation's (VDOT) Location and Design Public Hearing on proposed access management improvements on Interstate 81 Exit 150 and Routes 11 and 220 in Botetourt County.**

This public hearing is being held to provide an opportunity for any person, acting on his/her own belief or representing a group or governing agency, to give the department comments and/or suggestions on the proposed project.

VDOT strives to ensure that all members of the community are given the opportunity to participate in public decisions on transportation projects and programs affecting them.

VDOT representatives are present to discuss the project and answer your questions.

A comment sheet is included in the handouts for this meeting, and your input is encouraged. All oral and written comments received on this project will be included in a transcript for review by VDOT personnel, citizens and other interested parties.

## Project Overview



Aerial view of Route 11 north of Route 220 and Route 220A

**Cost** – Approximately \$41 million  
**Purpose** – To improve safety and capacity of the existing Route 11/220/220A intersection in conjunction with the interchange.  
**From** – 0.15 mile north of Route 1039 on Route 220 Alternate (at Norfolk Southern railroad)  
**To** – 0.50 mile south of Route 653 on Route 220  
**Total length** – 1.65 miles  
**Improvements** – Increase safety and capacity using new design improvements and access management