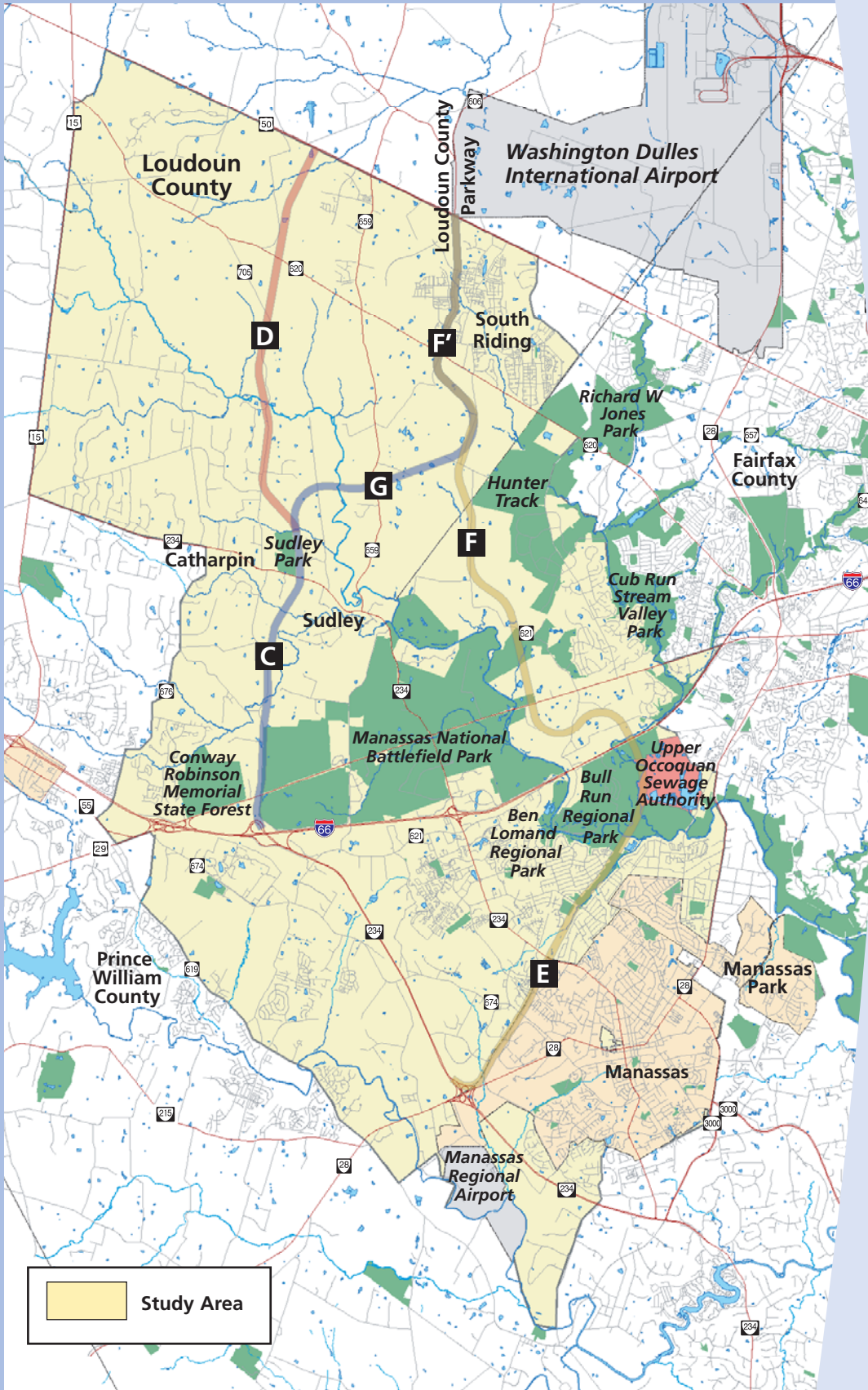


Tri-County Parkway Study Area

Candidate Build Alternatives



Alternatives Under Study

Throughout the study, the team has analyzed possible solutions based on the following alternatives: Build, No-Build, Mass Transit, and Transportation System Management (TSM). Since the last public meetings in March 2003, the Mass Transit and TSM alternatives have been eliminated from further detailed study and the Build Alternatives have been further narrowed to the following alternatives:

No-Build Alternative

Under this scenario, the Tri-County Parkway would not be constructed. No-build conditions include only the improvements already listed in the Constrained Long Range Plan for the region EXCEPT for the Tri-County Parkway.

Candidate Build Alternatives

The following Candidate Build Alternatives are potential solutions that meet the Purpose and Need of the project. Please refer to the map to view each of the three alternatives.

- **West Two**
This alternative is west of the Manassas National Battlefield and consists of Segments **D** and **C**.
- **West Four**
This alternative is west of the Manassas National Battlefield and consists of Segments **F**, **G** and **C**.
- **Comprehensive Plan**
This alternative is east of the Manassas National Battlefield and consists of Segments **F**, **F** and **E**.