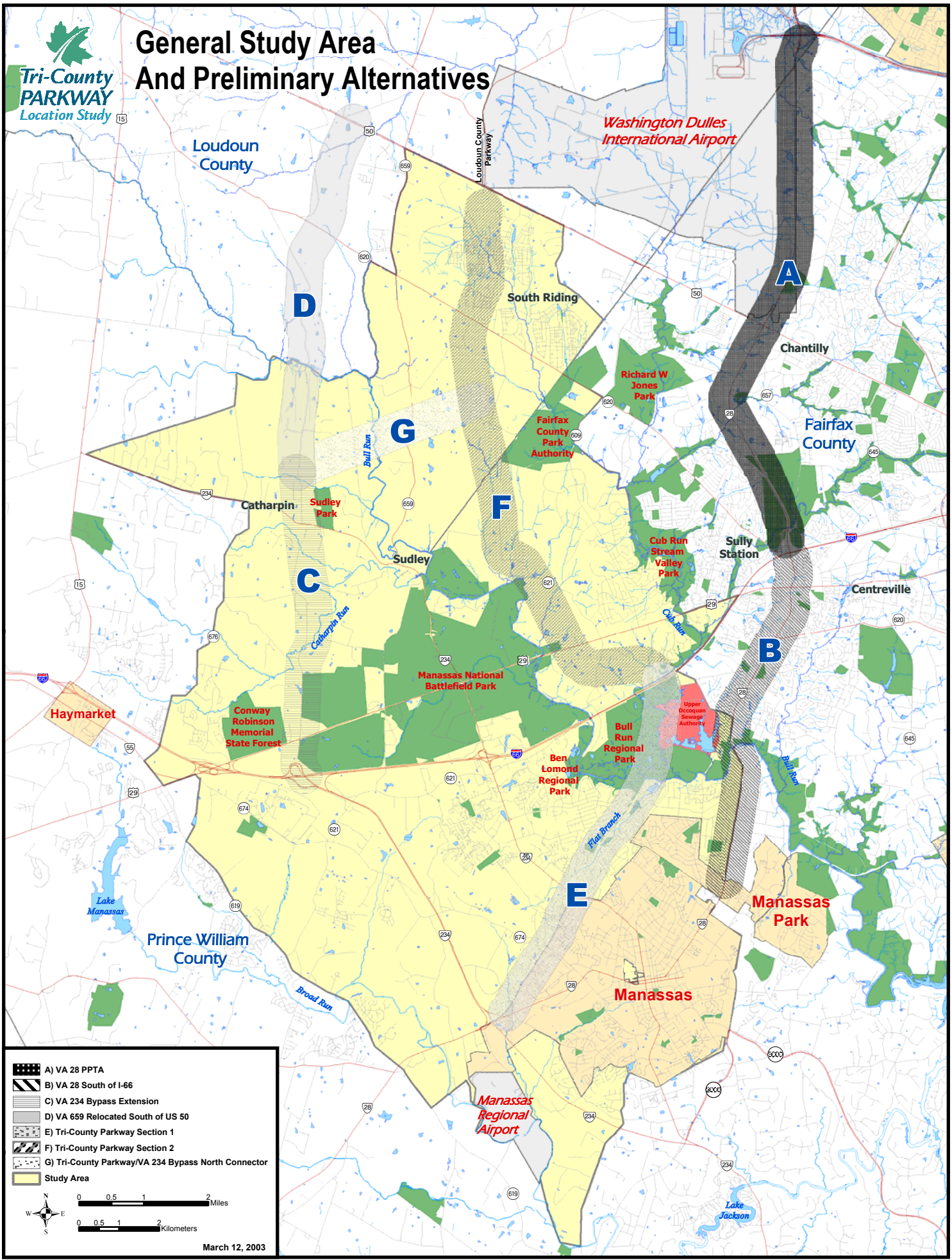







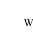
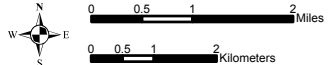




General Study Area And Preliminary Alternatives



-  A) VA 28 PPTA
-  B) VA 28 South of I-66
-  C) VA 234 Bypass Extension
-  D) VA 659 Relocated South of US 50
-  E) Tri-County Parkway Section 1
-  F) Tri-County Parkway Section 2
-  G) Tri-County Parkway/VA 234 Bypass North Connector
-  Study Area



March 12, 2003