

TRI-COUNTY PARKWAY LOCATION STUDY

SCOPING MEETING

March 2002

THE LOCATION STUDY PROCESS

The Location Study will proceed in five distinctive phases: (1) scoping, (2) alternatives development, (3) technical and environmental studies, (4) draft environmental impact statement and location public hearings (5) final environmental impact statement and the record of decision. All phases include opportunities for input from the public.

PHASE I

PROJECT INITIATION/
SCOPING / PURPOSE
& NEED

PHASE II

ALTERNATIVES
DEVELOPMENT

PHASE III

TECHNICAL &
ENVIRONMENTAL
STUDIES

PHASE IV

DRAFT
ENVIRONMENTAL
IMPACT STATEMENT
(DEIS)

LOCATION
PUBLIC
HEARINGS

PHASE V

FINAL
ENVIRONMENTAL
IMPACT
STATEMENT (FEIS)

RECORD OF
DECISION (ROD)

PROBLEM STATEMENT



Community Linkage



Mobility and Access

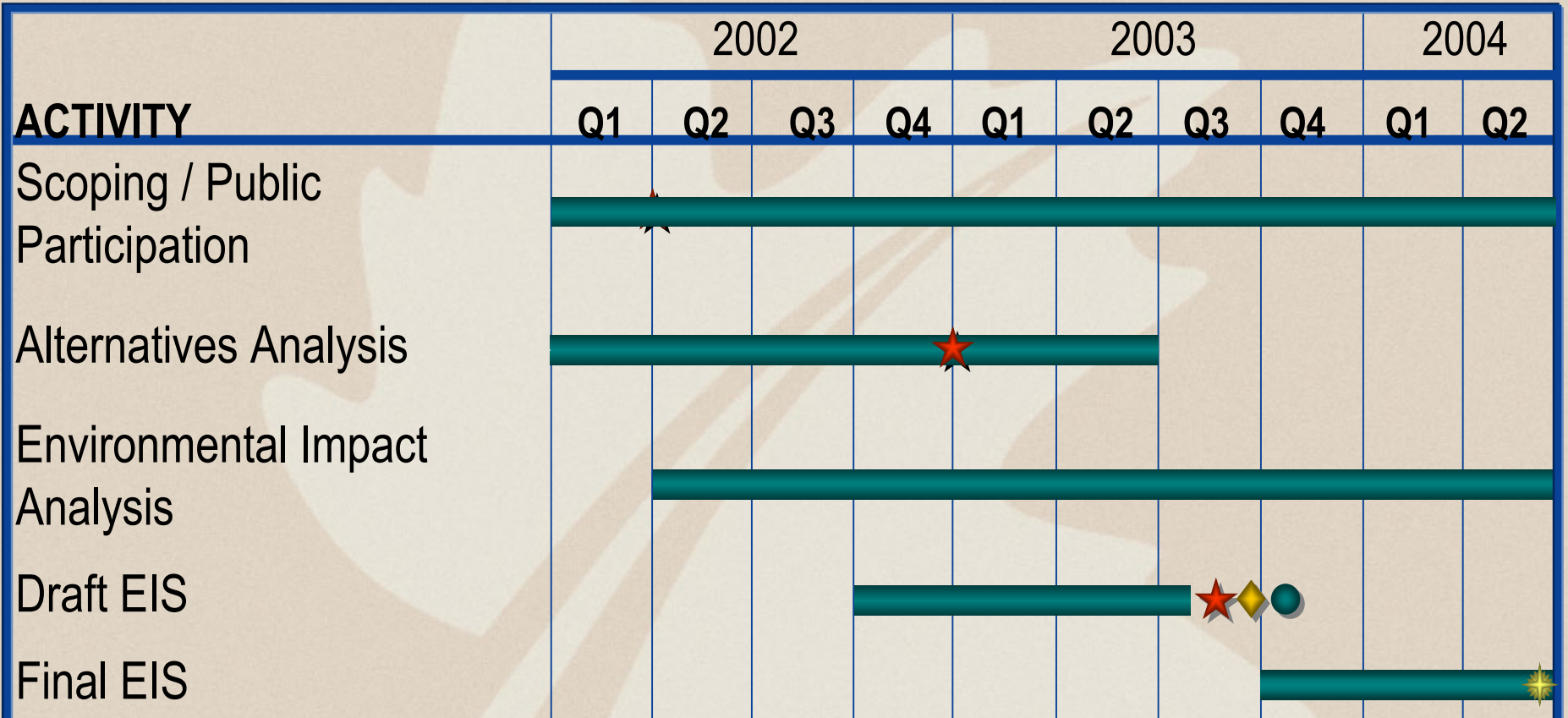


Congestion



**Network
Operations**

TRI-COUNTY PARKWAY SCHEDULE



Q – Year Quarterly

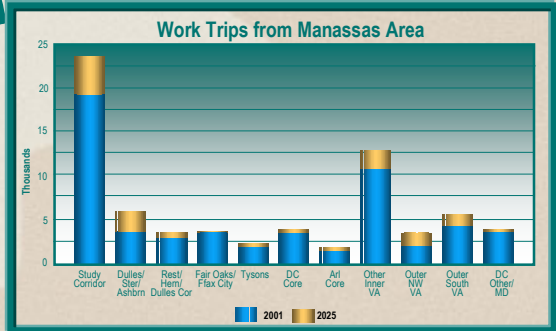
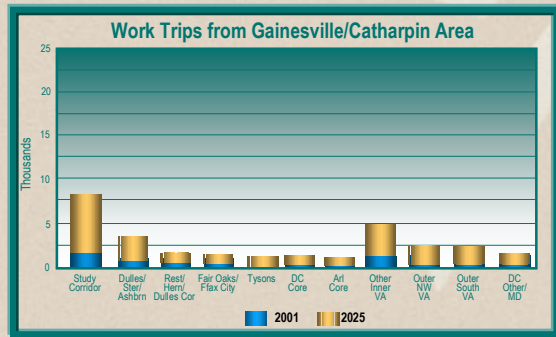
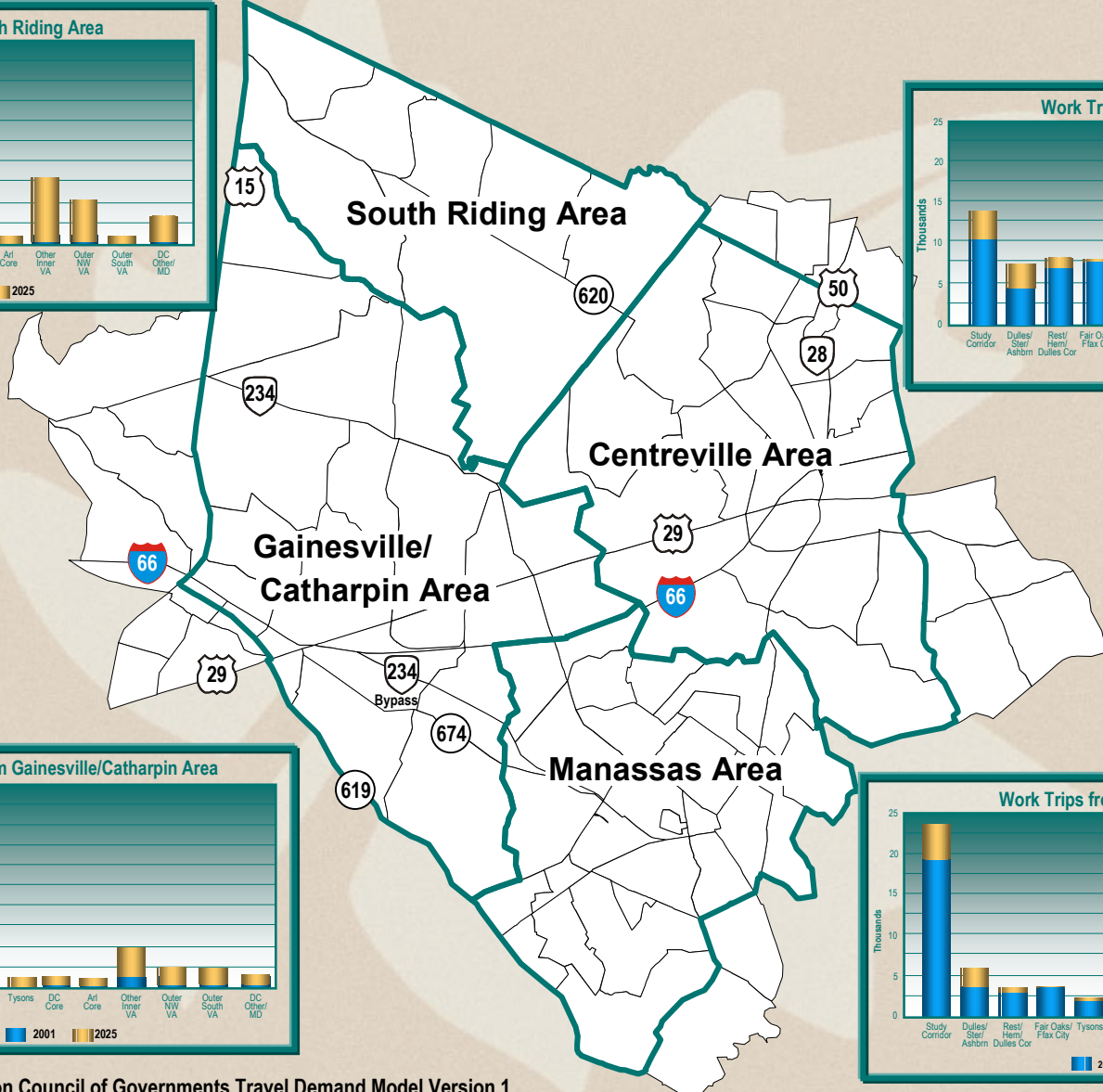
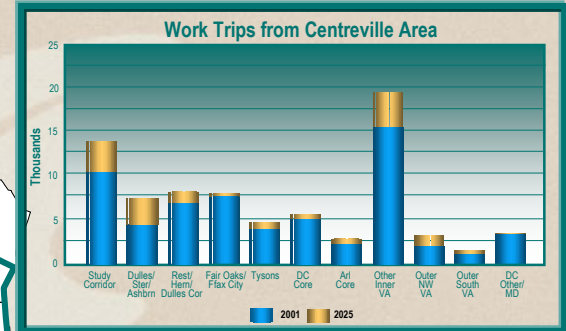
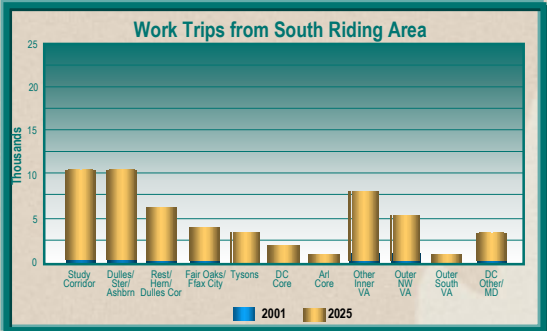
★ Citizen Participation Meetings

◆ Location Public Hearings

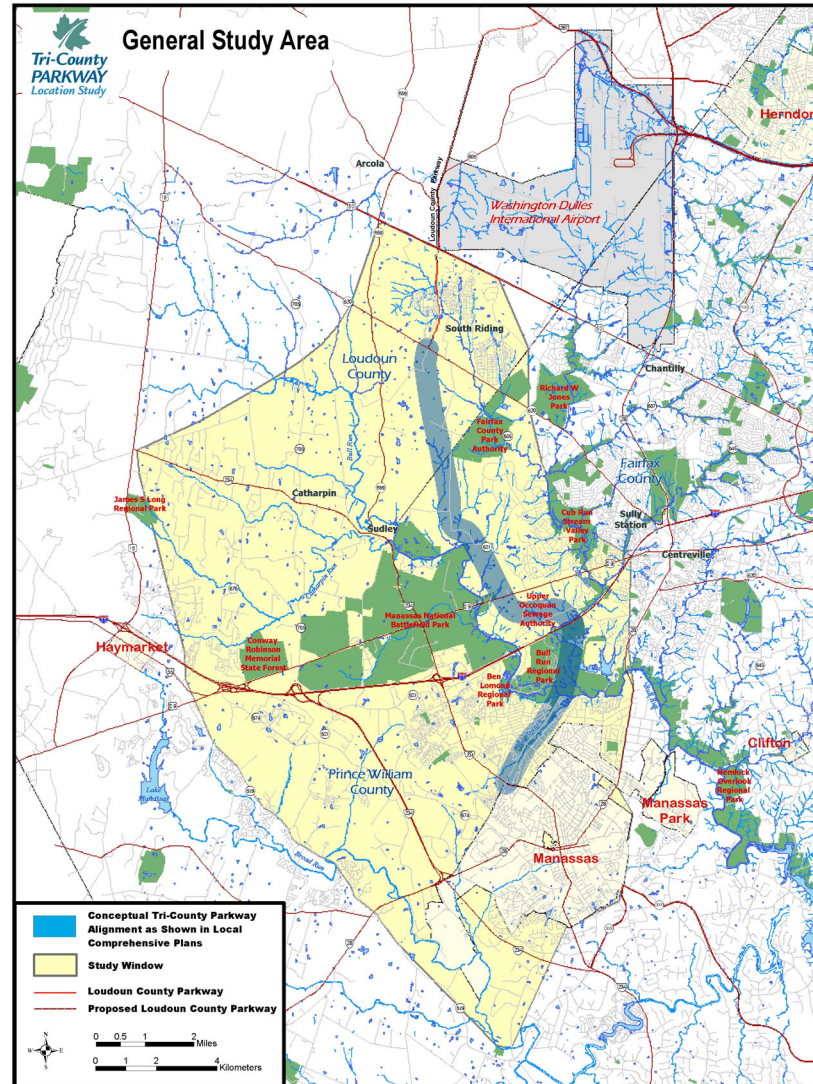
● CTB Action

✦ Record of Decision

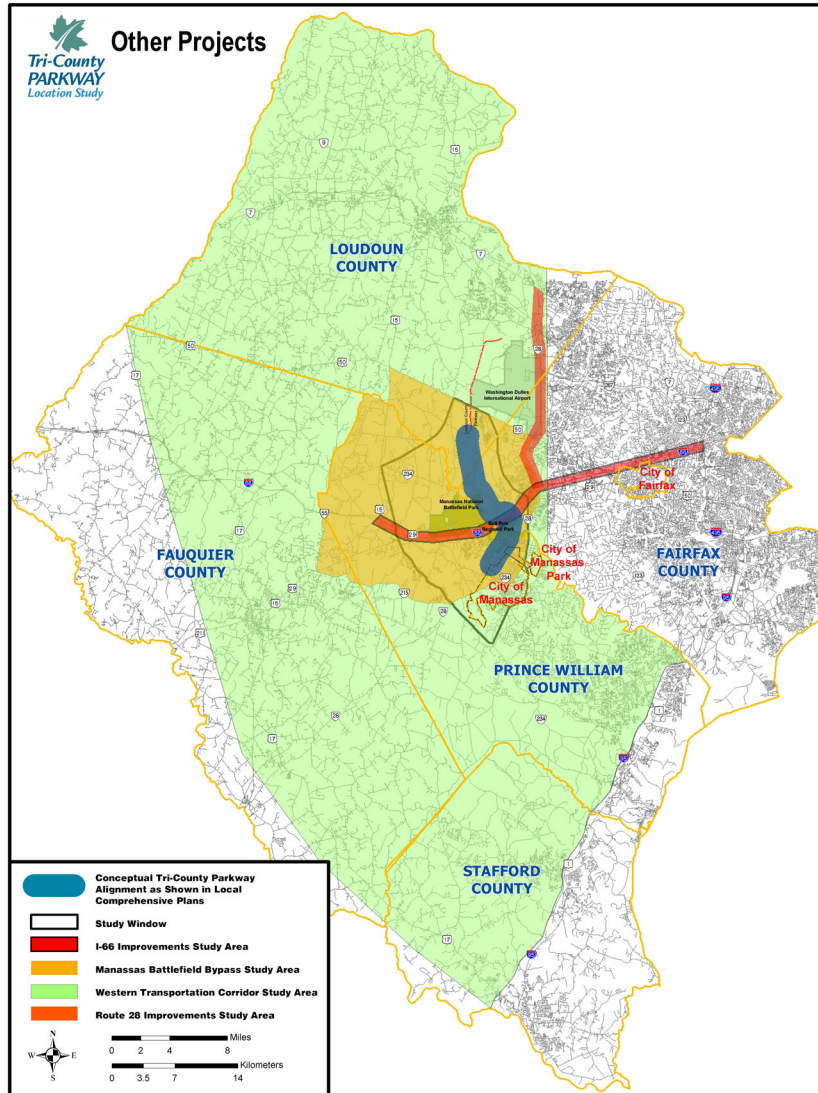
WORK TRIPS IN THE AREA



GENERAL STUDY AREA



OTHER PROJECTS IN THE AREA



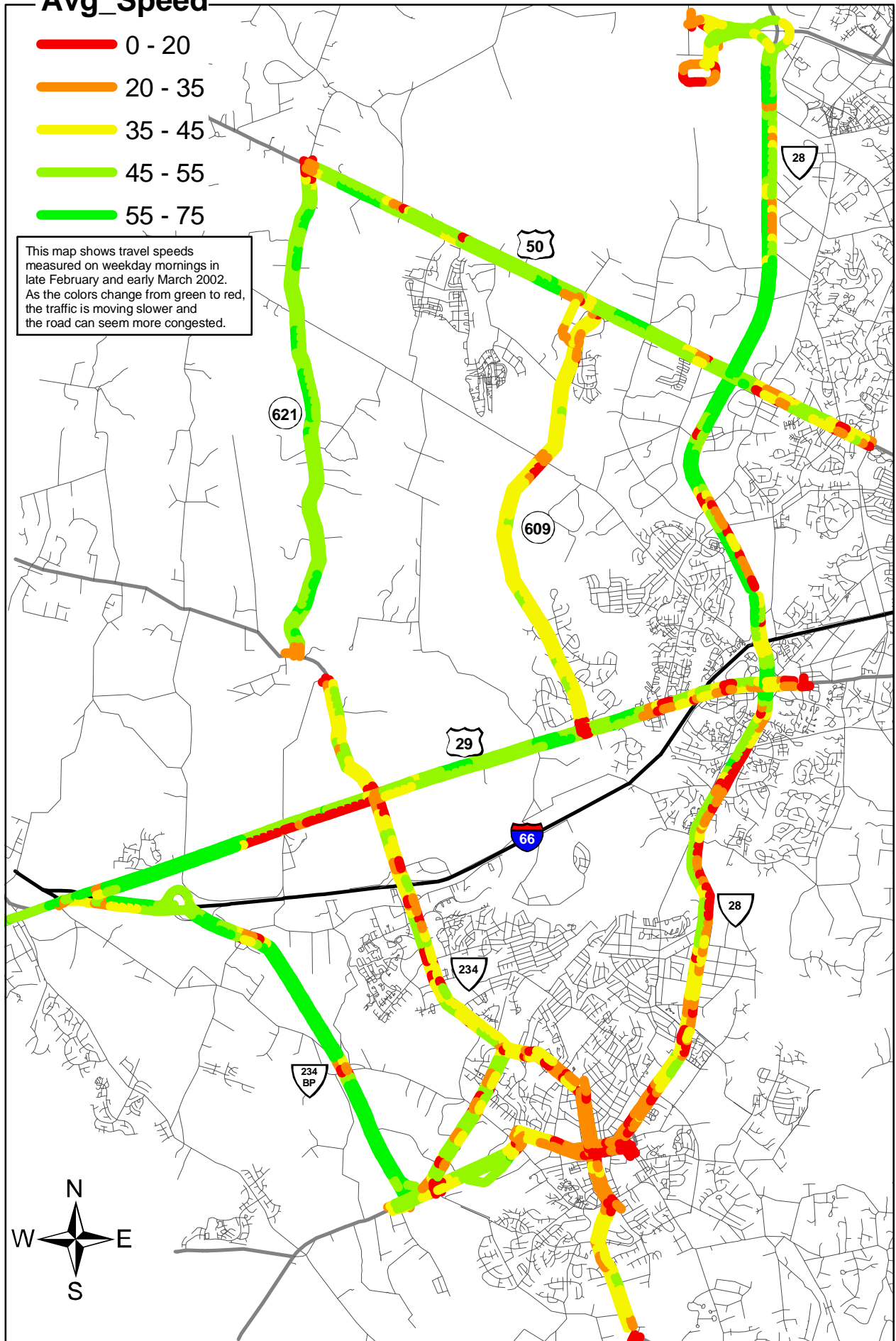
Legend

AM Peak Period (6:30-9:00) Average Speeds

Avg_Speed

- 0 - 20
- 20 - 35
- 35 - 45
- 45 - 55
- 55 - 75

This map shows travel speeds measured on weekday mornings in late February and early March 2002. As the colors change from green to red, the traffic is moving slower and the road can seem more congested.



Legend

PM Peak Period (4:00-6:30) Average Speeds

Avg_Speed

- 0 - 20
- 20 - 35
- 35 - 45
- 45 - 55
- 55 - 75

This map shows travel speeds measured on weekday evenings in late February and early March 2002. As the colors change from green to red, the traffic is moving slower and the road can seem more congested.

