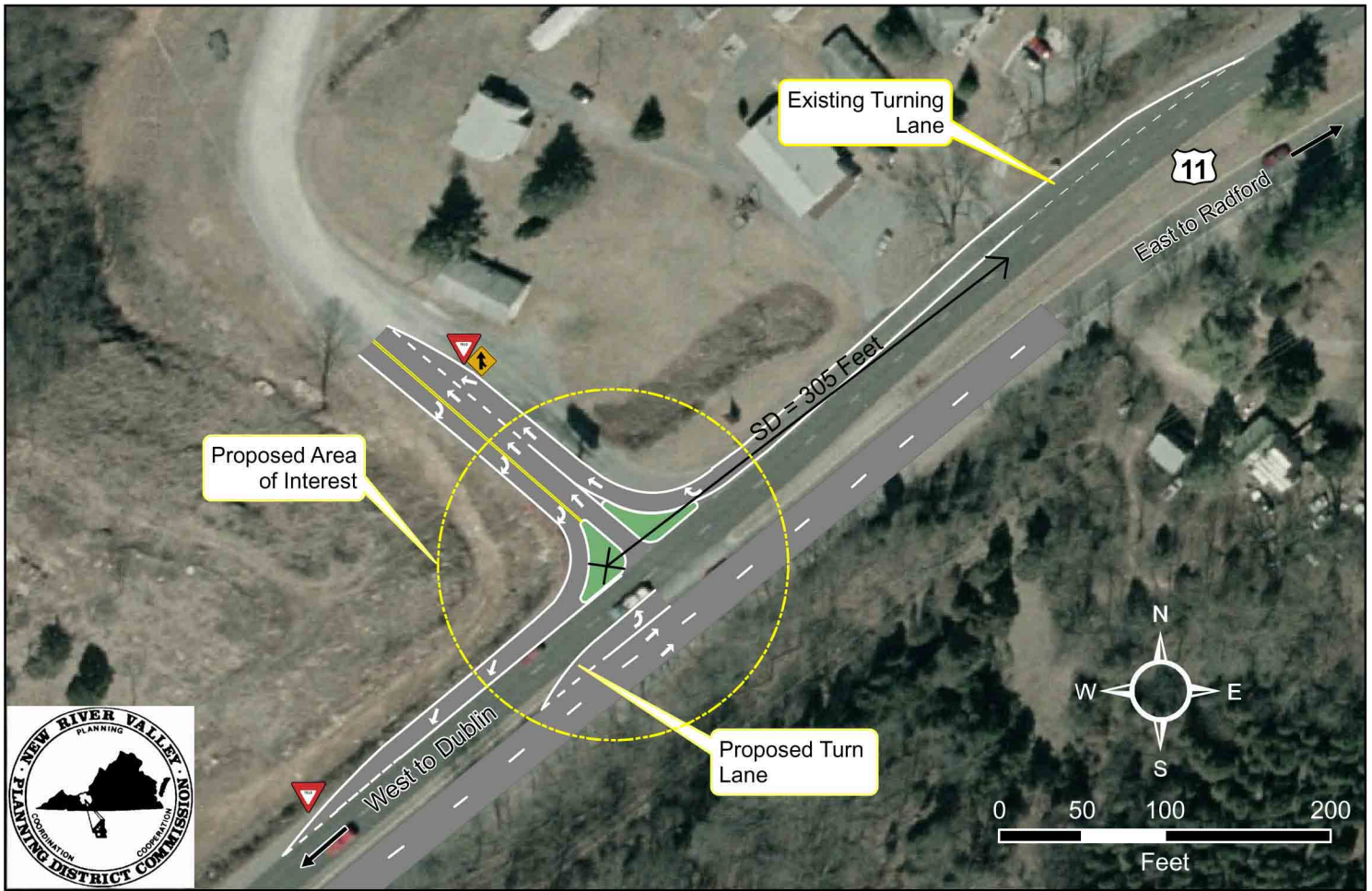


Motor Mile Speedway and Route 11 **A16**



Map produced by the NRVPCD using VGIN data. April, 2009

Site Specific Details:

Although a private entrance, this intersection has poor sight distance and congestion related issues that are greatly attributed to the rolling vertical grade of Route 11. The intersection currently has just over 300 ft. of site distance for entry onto Route 11. This conceptual plan directs traffic west bound and provides an acceleration lane to promote continuous movement. A potential east bound turning lane could be added with minor roadway structure widening also alleviating congestion during race days. It is proposed that this intersection be formally evaluated and a LOS be determined to propose potential improvements to this area.

General Notes:

1. The following intersection has been identified as a safety concern as a result of congestion or poor sight distance. The proposed improvements are conceptual only and should be evaluated and designed by a licensed engineer.
2. All sign and roadway improvements shown are conceptual only, and shall be designed in accordance with the latest edition of the Virginia Department of Transportation Roadway Design Manual.
3. Sight Distance is estimated and should be field verified for accuracy.

Legend

	Yield
	Merge Left
	Raised Median
	New Roadway
	Area of Interest
	SD Sight Distance
	Traffic Flow Arrow



Field photo of existing intersection of Speedway Entrance and Route 11. View of photo is to the east from roadside edge of pavement.



Field photo of existing intersection of Speedway Entrance and Route 11. View of photo is to the west from the center of the Speedway Entrance exit lane.



Field photo of existing intersection of Speedway Entrance and Route 11. View of photo is to the east from the center of the Speedway Entrance exit lane.