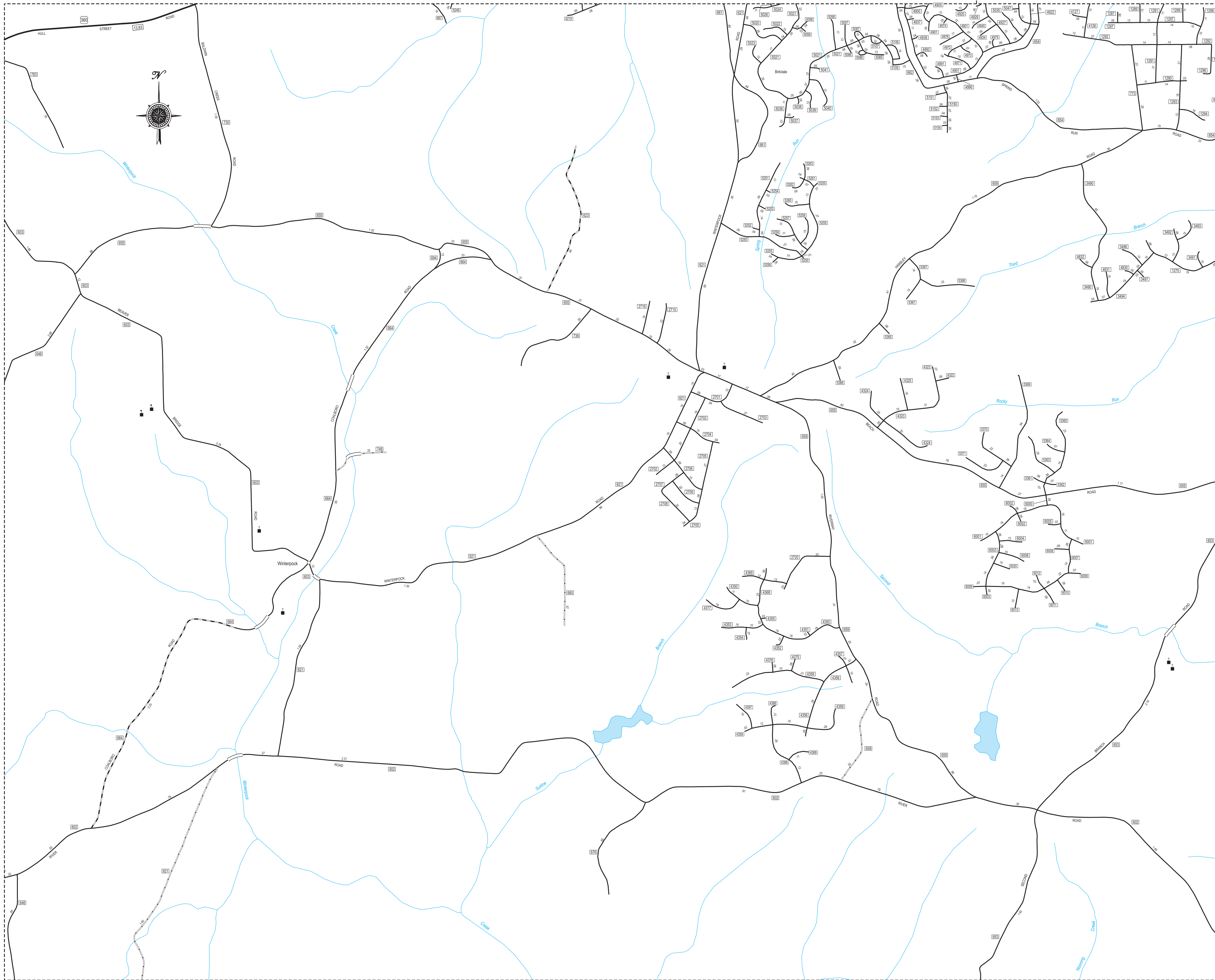


(MATCH LINE - SHEET "C")

(MATCH LINE - SHEET "D")



(MATCH LINE - SHEET "G")

- ROAD CLASSIFICATIONS**
- Divided Highway (Interstate)
 - Hard Surface
 - All Weather Surface
 - Light Surface
 - Unsurfaced
- HIGHWAY ROUTE SIGNS**
- Interstate Highway
 - US Highway
 - VA Primary Highway
 - VA Secondary Highway
 - Frontage Road
 - Forest Highway
 - US Bicycle Route
- RAILROADS**
- Single Track
 - Two or More Tracks
 - Regional Metro
- BOUNDARIES**
- State Line
 - County Line
 - Magisterial District Line
 - Incorporated Town or City
 - Park, Reservation, or Forest Boundary
- CITY AND VILLAGE CENTERS**
- State Capital
 - County Seat
 - Town or Village
- MISCELLANEOUS**
- Place of Worship
 - School
 - Park & Ride Lot
 - Transmission Line
 - Bridge
 - Primary Road Distances
- PORTS**
- Seaport
 - Military Airport
 - Commercial Airport
 - Other Airport
- Request for information on roads shown on this map should be addressed to
 Richmond District Administrator, Virginia Department of Transportation
 P.O. Box 3042, Colonial Heights, VA 23834
 804-524-6000 (TTY users, call 711)
- DISTANCES SHOWN ON MAP MAY NOT BE OFFICIAL DISTANCES.**
 Distances shown on Primary Roads are between Primary Road intersections and/or county lines. Distances shown on Secondary Roads are between intersections and corporate limits or county lines. Magisterial District Boundary lines shown parallel to features such as roads, streams, etc. are on the center line of such features. The accuracy or completeness of this map is not guaranteed or warranted.
- Map depicts state-maintained highway network as of January 1, 2001.
 Copyright © 2004 by Commonwealth of Virginia
 Department of Transportation, All Rights Reserved

CHESTERFIELD COUNTY, VA

COUNTY ROAD MAP

CHESTERFIELD COUNTY

Supplement F

0 880 1760 2640 3520
 0 200 400 600 800 1000
 FEET
 METERS

AN INVENTORY OF STATE-MAINTAINED ROADS
CHESTERFIELD COUNTY, VA 20F