



TRAFFIC ALERT

VirginiaDOT.org

RELEASE: **IMMEDIATE**
CONTACT: Tim Kelley, 757-956-3033
Media Line: 757-956-3032
HamptonRoadsPublicInfo@VDOT.Virginia.gov

Dec. 28, 2022

ROUTE 626 ROAD WORK TO BEGIN IN SOUTHAMPTON COUNTY

Road closure and signed detours scheduled to start as early as Jan. 3

SOUTHAMPTON COUNTY – Beginning as early as Jan. 3, the Virginia Department of Transportation (VDOT) will close a portion of Route 626 (Womble Mill Road) in Southampton County for maintenance work on the culvert under the roadway at Black Creek. The work, which includes applying a spray liner to increase the lifespan of the culvert, will require a full closure of Route 626 near Barrett Drive, with detours in place. Access will be maintained to all existing private property and business entrances within this corridor.

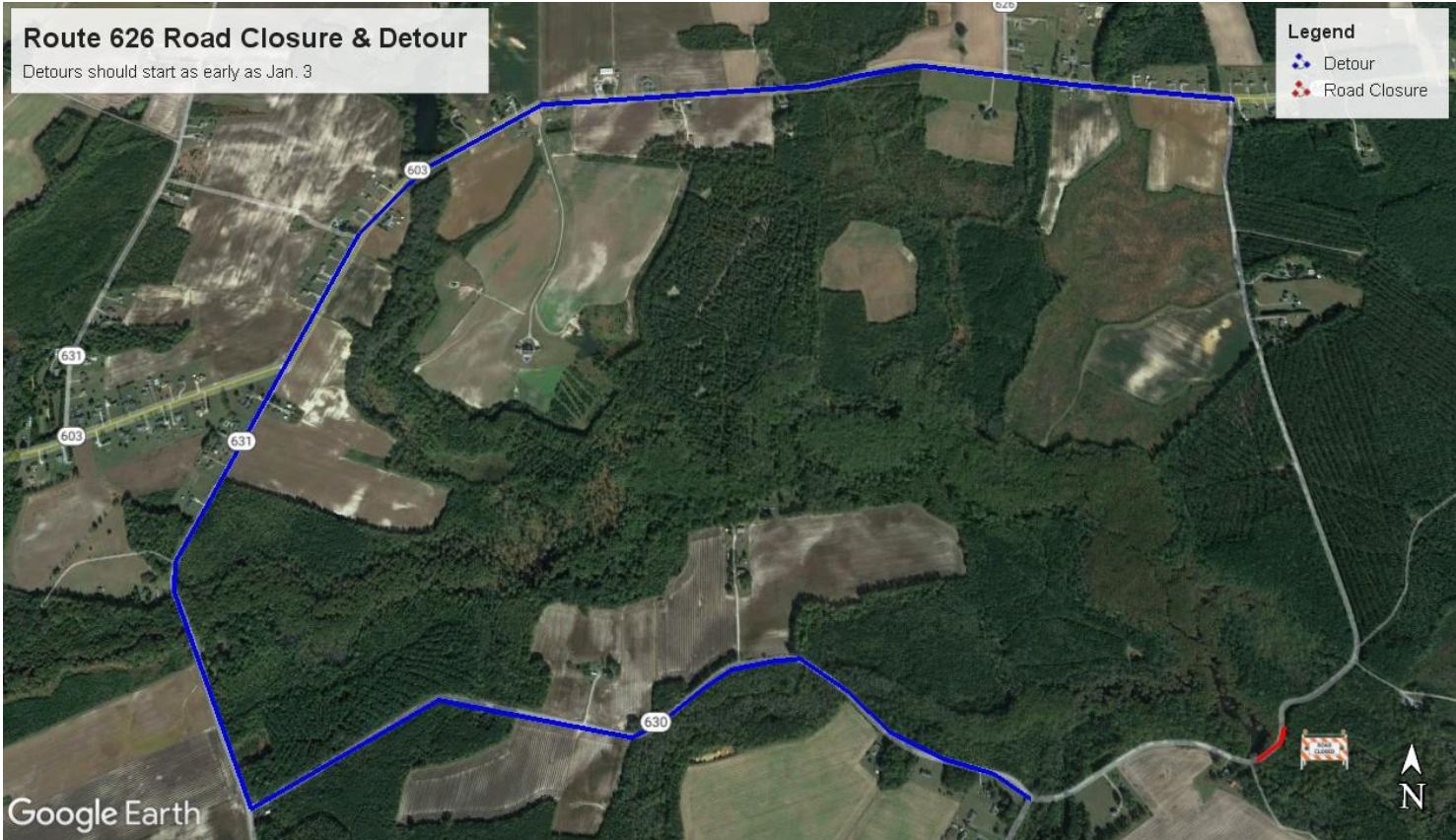
Motorists traveling east on Route 626 (Womble Mill Road) will detour by turning left onto Route 630 (Camp Farm Road), right onto Route 631 (Mission Church Road) and continue onto Route 603 (Unity Road).

Motorists traveling west on Route 626 will reverse the detour.

The closure is estimated to be in place approximately four weeks, weather and schedule permitting.

Motorists are advised to plan their commute by using VDOT's free traffic information tools:

- [Download](#) the 511 smartphone app or 511-integrated Waze app.
- Visit the [511 Virginia](#) website or dial 511 for traffic information on your phone.
- Follow [@511HamptonRoads](#) and [@VaDOTHR](#) on Twitter.



(END)