

VDOT LOCATION AND DESIGN DIVISION ORGANIZATIONAL CHART

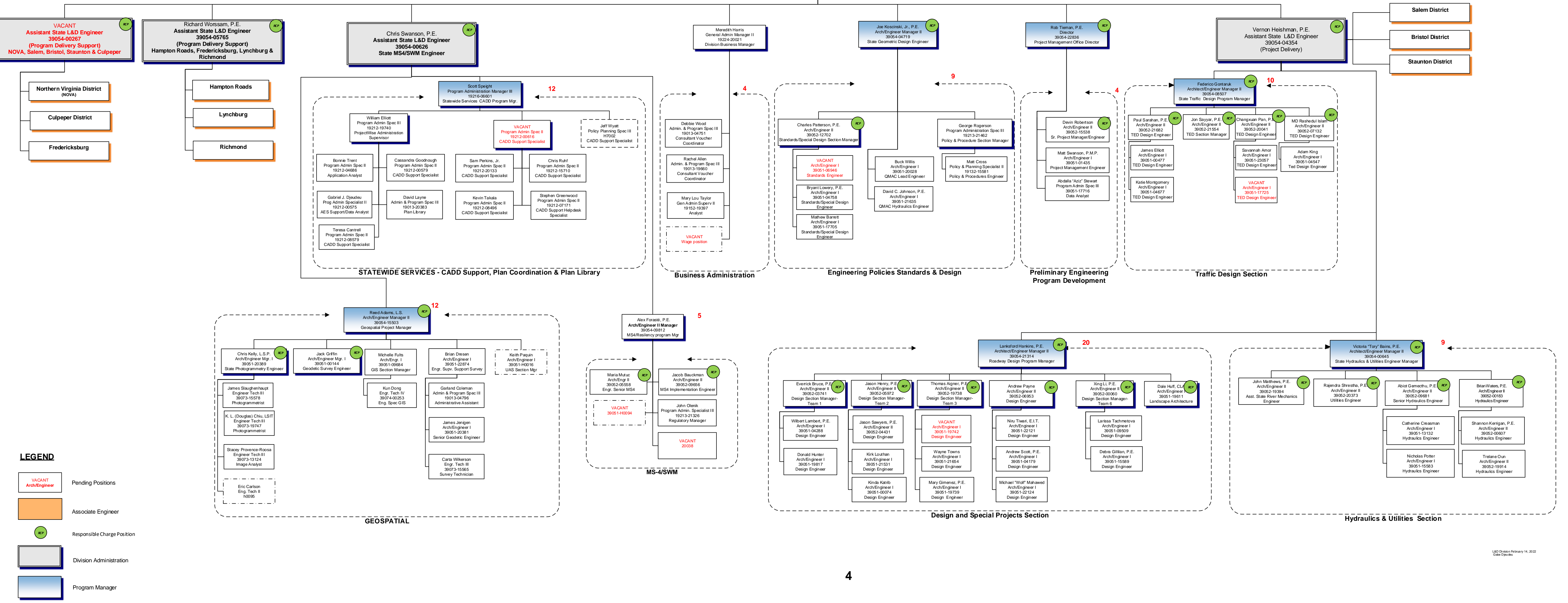
February 14, 2022

ERL = 90
Strength = 84
Vacant = 6

Emmett Heltzel, P.E.
39055-22954
State Location & Design Engineer
Division Administrator

- Salem District
- Bristol District
- Staunton District

- Northern Virginia District (NOVA)
- Culpeper District
- Fredericksburg
- Hampton Roads
- Lynchburg
- Richmond



LEGEND

- VACANT Arch/Engineer (Pending Positions)
- Associate Engineer
- Responsible Charge Position (RCP)
- Division Administration
- Program Manager