





RICHMOND HIGHWAY (U.S. ROUTE 1) SPEED LIMIT STUDY

Virtual Public Information Meeting

November 30, 2021 7:00 PM – 8:30 PM

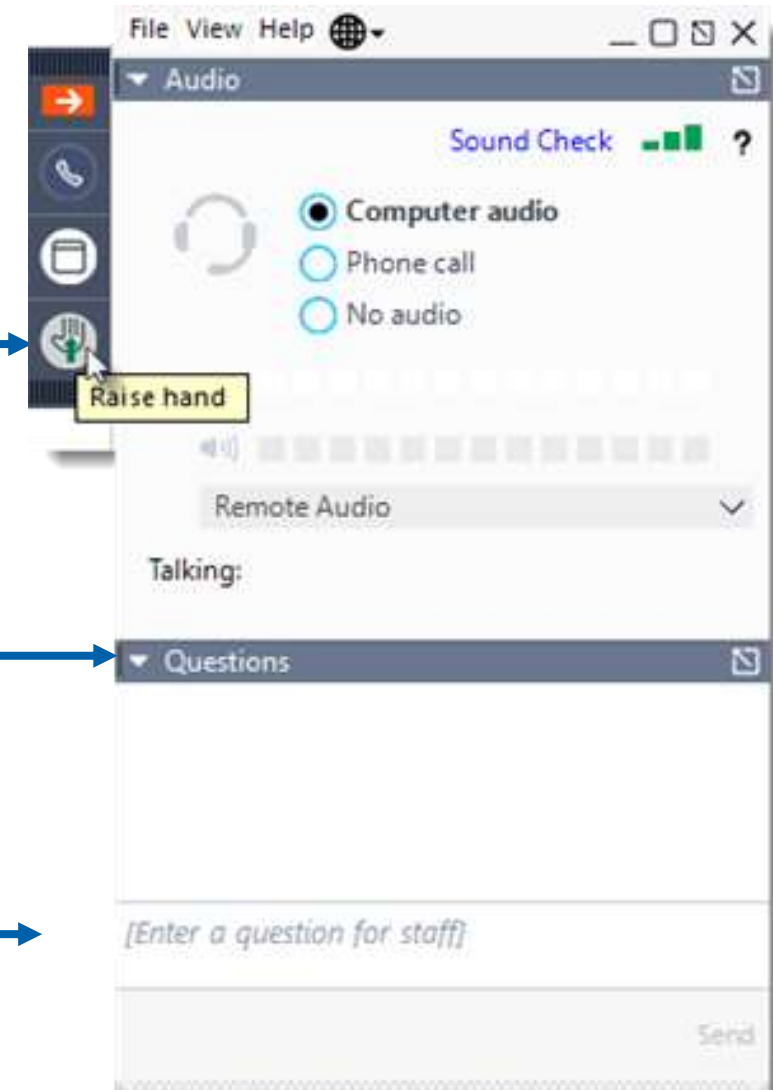
Virtual Public Information Meeting in Response to COVID-19

The virtual public information meeting and VDOT website provides the same information as an in-person meeting:

- ✓ **Study information**
- ✓ **Estimated schedule**
- ✓ **Processes for submitting comments**
- ✓ **Key contacts**

GoToWebinar Tips

- **If you want to ask an oral question**
 - Raise your hand and unmute yourself.
 - The moderator will state your name when it is your turn to ask a question
- **If you want to write a question**
 - Expand the Questions Box
 - Type in [*Enter a question for staff*] to ask a written question
- **All participants are muted.**
- **If you get disconnected, please attempt to rejoin the meeting.**



Presentation Agenda

- **Introduction**
 - Gil Chlewicki, VDOT Northern Virginia District Traffic Engineer
- **Study Overview**
 - Tien-Jung "Tina" Ho, Project Manager, VDOT Traffic Engineering
- **Speed Limit Study Process**
 - Warren Hughes, ATCS, PLC, Speed Limit Study Manager
- **Study Schedule**
 - Michelle Cavucci, VHB, Consultant Project Manager
- **Questions and Answers**
 - Andrew Beacher, VDOT Preliminary Engineering, Q&A Moderator

Study Location



Study Need

- **Safe mobility for drivers, pedestrians, cyclists, and transit users is a priority**
- **Several safety initiatives underway along the corridor, by VDOT and Fairfax County**
 - **New sidewalk and trail connections**
 - **Transit**
 - **Pedestrian and bicycle safety**
 - **Intersection improvements**
- **Appropriate travel speeds and posted speed limit(s) are essential to addressing evolving safety needs and changes on Richmond Highway**

This Speed Limit Study Will...

- Evaluate the existing 45 mph speed limit
- Conduct technical analyses to determine appropriate speed limit along 7.8-mile corridor
 - Based on existing conditions
 - Focused on speed limit study factors
 - Considering drivers, pedestrians, bicyclists and transit users
- Recommend speed limit(s) on Richmond Highway

Richmond Highway Study Area



Richmond Highway Changes in Cross Section



Setting Speed Limits

- For speed limit changes, an engineering study is required by Virginia law
- VDOT study requirements
 - Signed and sealed by a Professional Engineer
 - Submitted in a specific format

VDOT Speed Study Template for Non-Limited Access Highways - Version Date June, 2019

Speed Limit Study–Non-Limited Access Highways

_____ District Traffic Engineering

Note: Text in gray is for guidance & should be removed from the final study document. All other text is intended to be conveyed in the final study. For an example speed limit study [click here](#)


Date / /

Note: Text in gray is for guidance & should be removed from the final study document. All other text is intended to be conveyed in the final study. For an example speed limit study [click here](#)

Route # / Street name (e.g. Interstate 95)
VDOT District:
Jurisdiction(s): indicate jurisdictions in the study area
From:
To:
The "From" & "To" describe the general begin/end locations that encompass the area of study and may be different than the final recommended termini for the speed limit [changes](#). e.g. From the eastbound entrance ramp of Route 696 at exit 24 to the eastbound exit ramp at exit 44
Length: e.g. 20.3 miles

Study Area Map Insert map indicating study section/area and other relevant details such as affected jurisdictions, proposed speed limit zone(s), crash locations, signage etc.

Functional Class: e.g. urban or rural interstate; rural principal arterial etc. for other limited access, multi-lane, divided highways



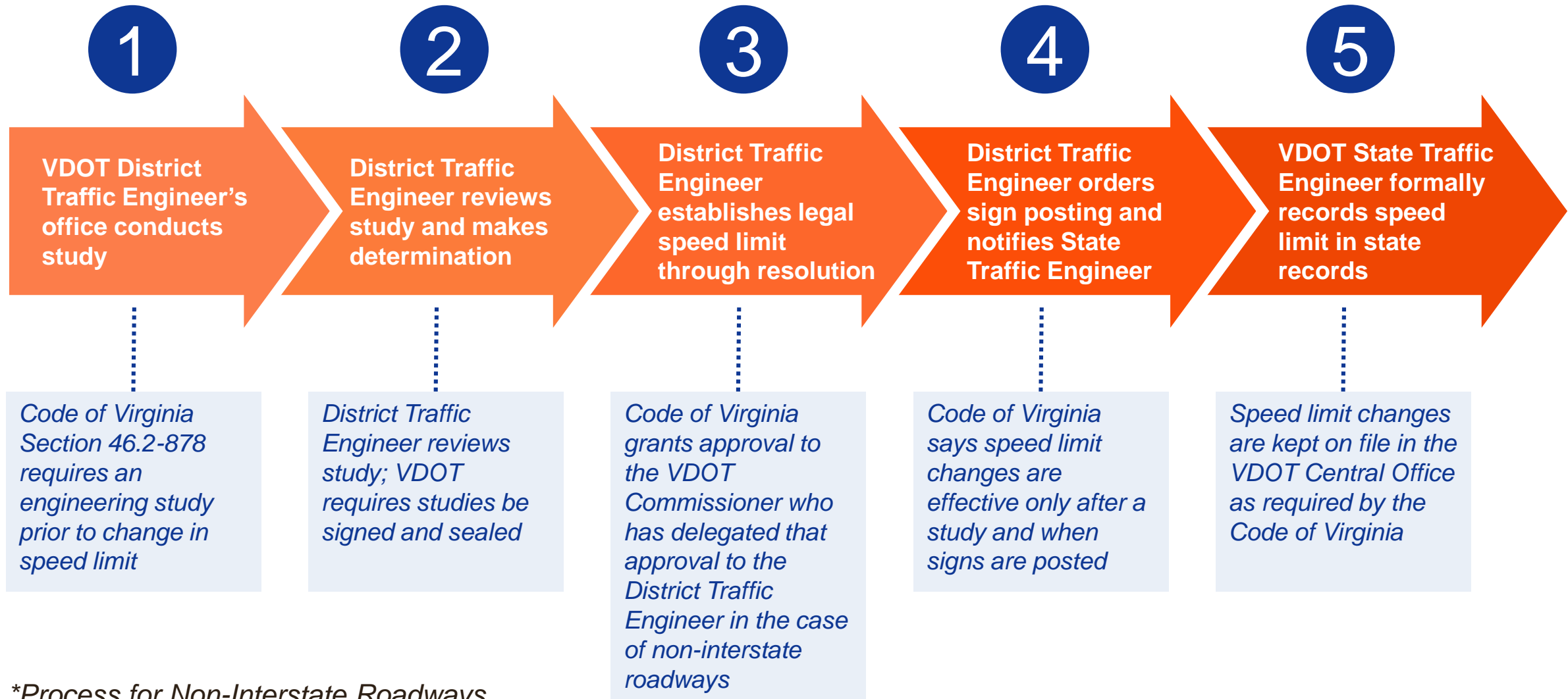
ENGINEER
NAME
Lic. No. 00000

PROFESSIONAL ENGINEER

PLACE SIGNATURE HERE

VDOT - Traffic Engineering
[OFFICE LOCATION]
Traffic Engineer

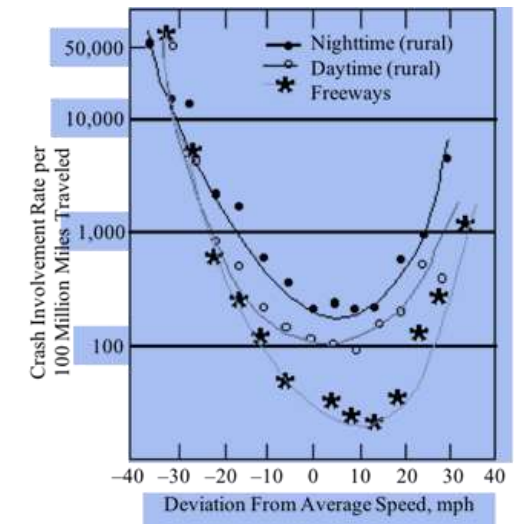
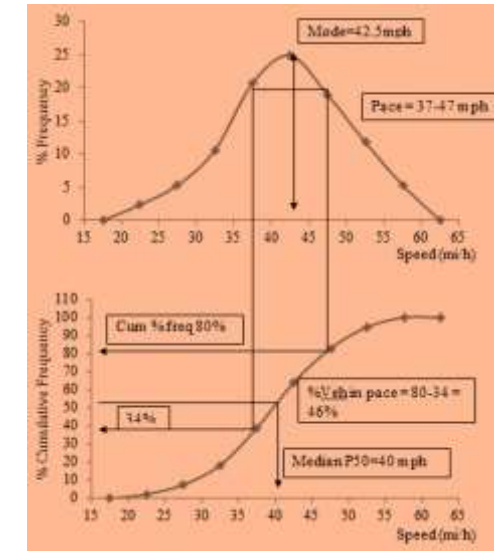
Setting Speed Limits*



**Process for Non-Interstate Roadways*

Factors Considered in Speed Limit Studies

- **Data on vehicle speeds**
 - **Distribution of speeds collected at multiple locations in study section**
 - 85th percentile speed
 - 50th percentile or median speed
 - 10 mph Pace – range in speeds that includes a high percentage of observations
- **Reported crash experience**
 - **Minimum of 3 years of crash data**
 - Number of crashes, injuries from crashes, and fatalities from crashes
 - Rates of fatalities, personal injuries and crashes
 - Comparison to statewide average rates for similar roads



Factors Considered in Speed Limit Studies

- **Functional classification**
- **Physical roadway features**
 - Number of lanes, medians, lane widths, shoulder widths, and clear space on the roadside
 - Grades and curves
 - Roadside (guardrails, objects, side slopes)
- **Traffic control devices**
 - Frequency of traffic signals
 - Existing speed limit
 - Adequacy of regulatory, warning and guide signs
 - Adequacy of centerlines, edge lines, other pavement markings, raised pavement markers



Factors Considered in Speed Limit Studies

- **Traffic and operations**
 - Traffic volumes
 - Percentage of trucks
 - Entering and exiting traffic at intersecting roads
- **Pedestrian and bicycle facilities and activity**
 - Presence of sidewalks and paths
 - Pedestrian crosswalks
 - Pedestrian and bicycle flows



Factors Considered in Speed Limit Studies

- Roadway type and roadway context
- Roadside environment, including adjacent development
- State and local police comments and concurrence



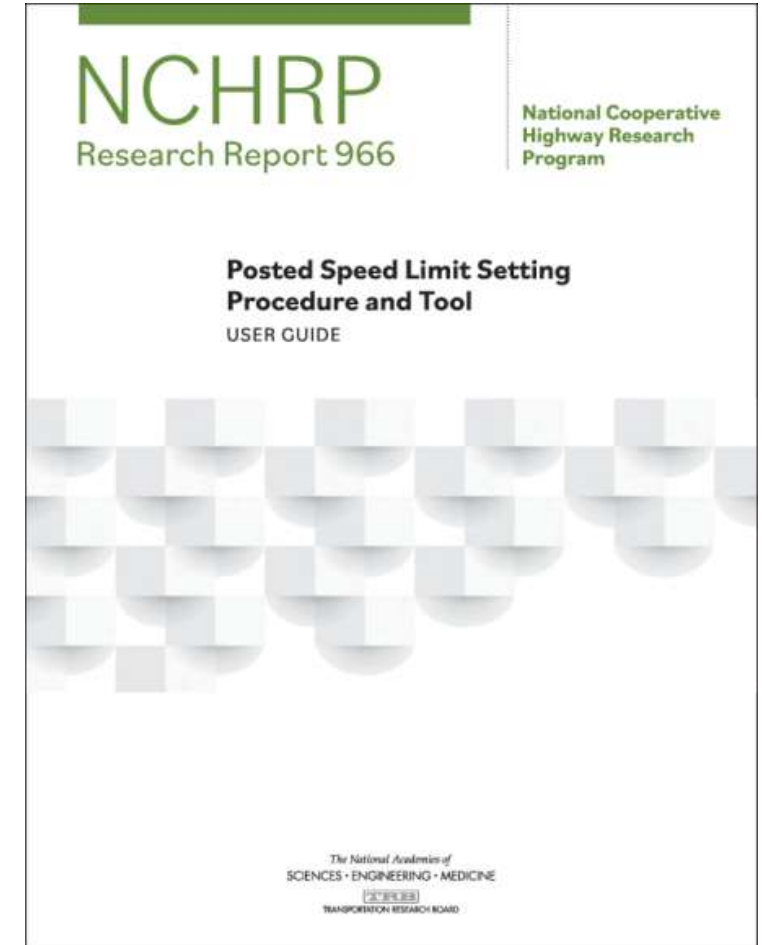
D. Law Enforcement Consensus: Where a speed limit change is proposed the study and speed limit recommendation, along with a request for comments and concurrence, should be conveyed to the Virginia State Police (VSP) at the appropriate district (click [here](#) for VSP districts) and to local law enforcement for the affected jurisdiction(s) and their response detailed as laid out below. A response from VSP is required in the final study.

The recommended speed limit change has been discussed with _____
Indicate officers name of the Virginia State Police who _____ (indicate either concurs or opposes as appropriate) the recommended speed limit within their jurisdiction. The available and appropriate accident and law-enforcement data has been requested.

The Virginia State Police Officer: Concurs with Opposes the recommended speed limit
Law enforcement comments: _____ document law enforcement comments here

Integrating Best Practices

- **Information from latest national research with best practices**
 - **National Cooperative Highway Research Program (NCHRP) Report 966 – Posted Speed Limit Setting Procedure and Tool: User Guide (2021)**
 - **National Transportation Safety Board (NTSB) publication – Reducing Speeding-Related Crashes Involving Passenger Vehicles (2017)**
- **Roadway context and roadway type**
- **Guidelines based on speed distribution, roadway conditions, driver speed choice, and safety**



Anticipated Study Schedule

Milestones	Dates
Public Information Meeting #1	November 30, 2021
Draft Report & Recommendations	Early Spring 2022
Public Information Meeting #2	Spring 2022
Final Report	Summer 2022

How to Submit Your Comments

Give feedback on the virtual public information meeting in the following ways by December 10, 2021:



Email Us

MeetingComments@vdot.Virginia.gov
Please reference “Richmond Highway
(Route 1) Speed Limit Study in
Fairfax County”
in the subject line

Mail Us

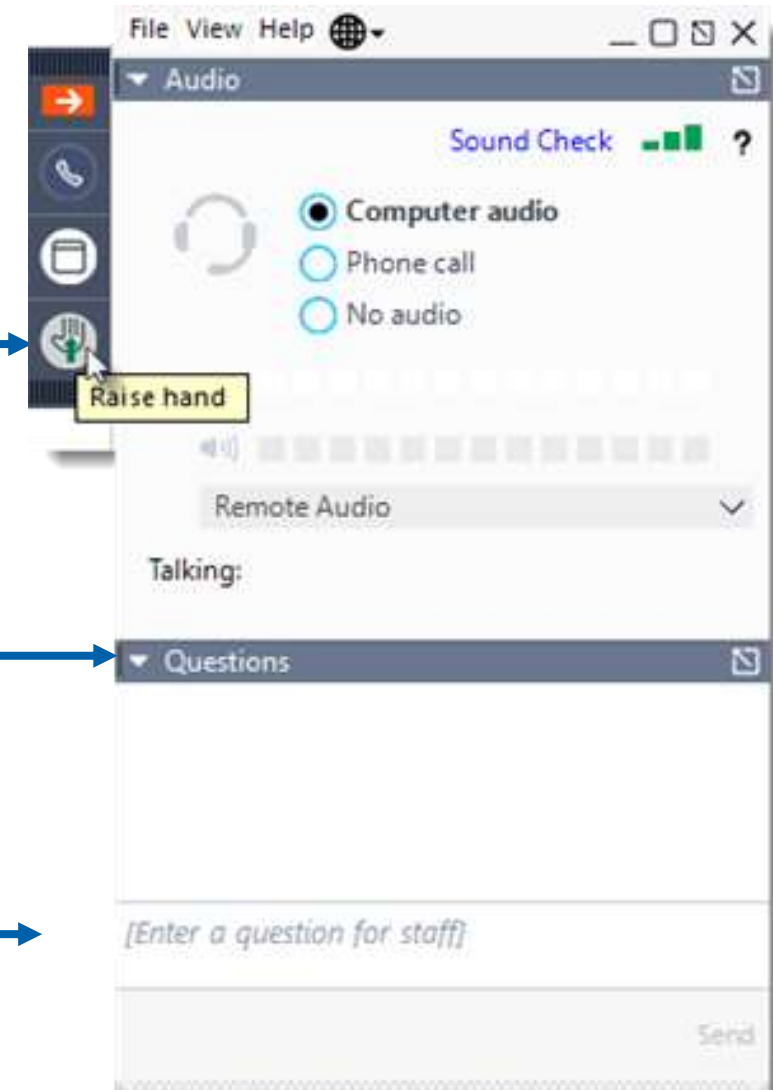
Ms. Tien-Jung “Tina” Ho, P.E.
VDOT’s Northern Virginia District
4975 Alliance Drive
Fairfax, Virginia 22030

Comment

In the Questions window during the
virtual meeting or online at
virginiadot.org/Route1SpeedLimitStudy

GoToWebinar Tips

- **If you want to ask an oral question**
 - Raise your hand and unmute yourself.
 - The moderator will state your name when it is your turn to ask a question
- **If you want to write a question**
 - Expand the Questions Box
 - Type in *[Enter a question for staff]* to ask a written question
- **All participants are muted.**
- **If you get disconnected, please attempt to rejoin the meeting.**



Important Initiatives on Richmond Highway

- **More than \$500 million has been invested in pedestrian and bicycle infrastructure improvements in Fairfax County;**
 - More than \$55 million in the Richmond Highway Corridor.
- **Signalized pedestrian crossing improvements**
 - Early pedestrian start into crosswalk and more WALK opportunities
 - Higher visibility crosswalks
 - Audible pedestrian pushbuttons for visually impaired
- **Additional intersection improvements**
 - Mt. Vernon Highway
 - Fort Hunt Rd
- **Public Transportation Initiative**



Thank You!



VDOT Speed Limit Study Overview

- **Set speed limits that promote safe and efficient flow of traffic considering**
 - Speed
 - Roadway
 - Crash history
 - Surrounding context
 - Enforcement
- **Obtain speed data sample considering**
 - Traffic conditions
 - Weather
 - Alignment, grade, pavement conditions
 - Multiple sites to account for variability in roadway and driver characteristics

Questions Related to Other Richmond Highway Projects

- **For questions related to the VDOT Richmond Highway Widening Project**

Dan Reinhard

Dan.Reinhard@vdot.virginia.gov

703-259-2599

- **For questions related to the Fairfax County Bus Rapid Transit Project**

DOTBRT@fairfaxcounty.gov

703-877-5600

**Fairfax County Department of Transportation, Richmond
Highway BRT Project Manager, 4050 Legato Rd, Fairfax, VA 22033**