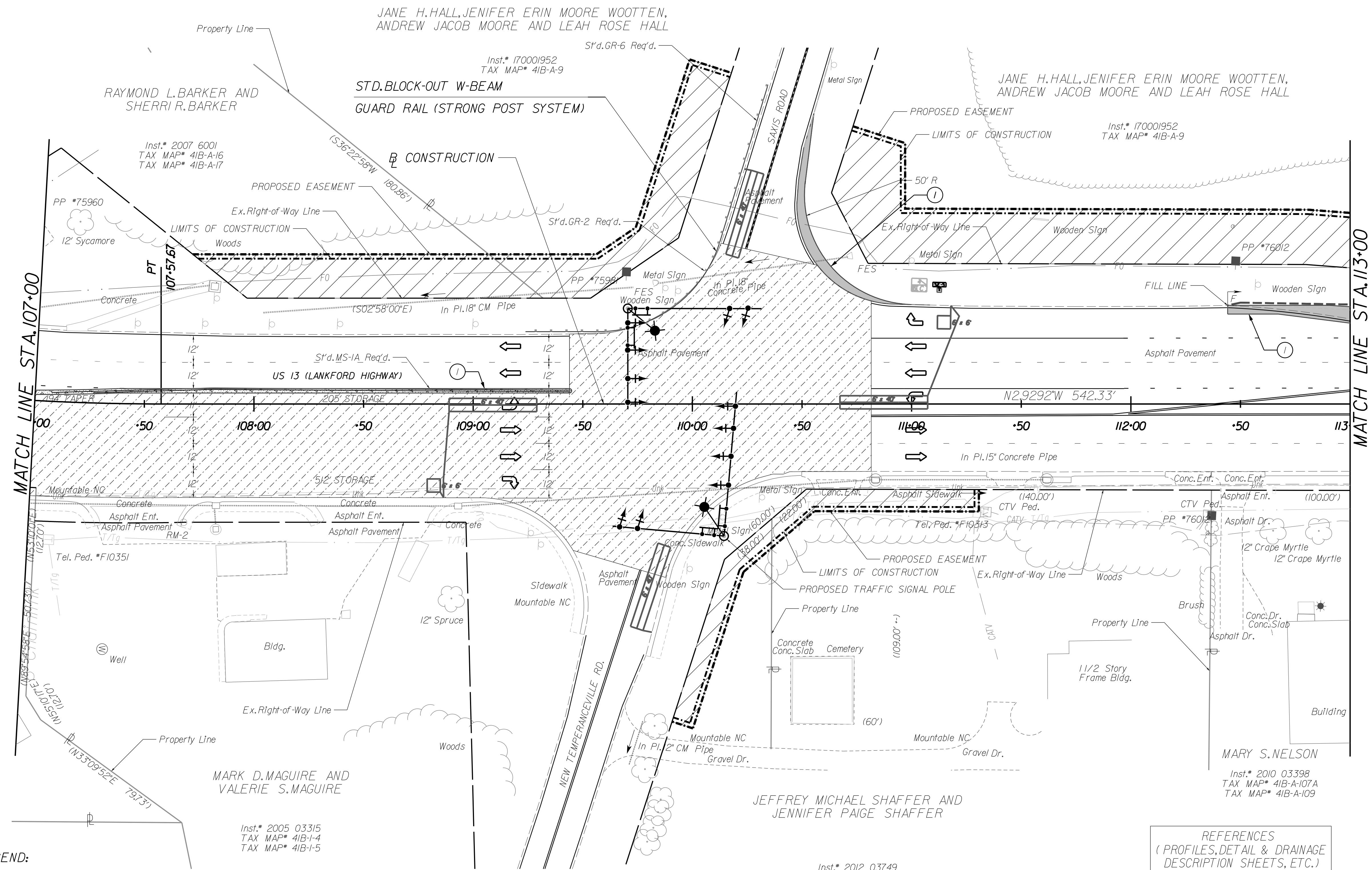


PROJECT MANAGER *Nancy Machsball* (757) 925-2482 (V.DOT)
 SURVEYED BY *R. Dean Minola, L.S.* (757) 925-2660 (V.DOT)
 DESIGN SUPERVISED BY *Shashikant Patel, P.E.* (443) 741-3500 (Sabca/Wang)
 DESIGNED BY *Liang Tang, E.I.T.* (443) 741-3502 (Sabca/Wang)

ROADWAY PLAN

REVISED	STATE	FEDERAL AID	ROUTE	STATE PROJECT	SHEET NO.
	VA.		13	NFO 0013-001-695 PE-101, RW-201, C-501	4

DESIGN FEATURES RELATING TO CONSTRUCTION OR TO REGULATION AND CONTROL OF TRAFFIC MAY BE SUBJECT TO CHANGE AS DEEMED NECESSARY BY THE DEPARTMENT



LEGEND:

- CONCRETE SIDEWALK/MEDIAN
- FULL DEPTH PAVEMENT
- MILLING AND RESURFACING
- SAW CUT AT EDGE OF PROPOSED ROAD WORK
- TEMPORARY EASEMENT AREA

REFERENCES
 (PROFILES, DETAIL & DRAINAGE DESCRIPTION SHEETS, ETC.)
 US 13 PROFILE 04A

PUBLIC HEARING PLANS

THESE PLANS ARE UNFINISHED AND UNAPPROVED AND ARE NOT TO BE USED FOR ANY TYPE OF CONSTRUCTION OR THE ACQUISITION OF RIGHT-OF-WAY.

HORIZONTAL SCALE 0 25' 50'

PROJECT 0013-001-695 SHEET NO. 4

Communications:
 Verizon
 2920 Elmhurst Lane
 Portsmouth, VA 23701
 Tel: 757-667-3110

Electric:
 A&N Electric Cooperative
 21275 Cooperative Way
 Tasley, VA 23441
 Tel: 757-787-9750

MARY S. NELSON
 Inst.* 2010 03398
 TAX MAP* 41B-A-107A
 TAX MAP* 41B-A-109

Inst.* 2012 03749
 TAX MAP* 41B-1-1
 TAX MAP* 41B-1-2
 TAX MAP* 41B-1-3
 TAX MAP* 41B-A-107
 TAX MAP* 41B-A-108

Inst.* 2005 03315
 TAX MAP* 41B-1-4
 TAX MAP* 41B-1-5

Inst.* 2007 6001
 TAX MAP* 41B-A-16
 TAX MAP* 41B-A-17

Inst.* 170001952
 TAX MAP* 41B-A-9

Inst.* 170001952
 TAX MAP* 41B-A-9

\$REF006 \$LEV006

\$DOW \$SIGN \$TIME \$STAMPS